

As you are now the owner of this document which should have come to you for free, please consider making a donation of £1 or more for the upkeep of the (Radar) website which holds this document. I give my time for free, but it costs me around £300 a year to bring this document to you. You can donate here <https://blunham.com/Radar>, thank you.

Do not upload this copyright pdf document to any other website. Breaching copyright may result in a criminal conviction and large payment for Royalties.

This document was generated by me, Colin Hinson, from a document held at R.A.F. Henlow Signals Museum which is believed to be out of copyright or Crown Copyright. It is presented here (for free) under the Open Government Licence (O.G.L.) if under Crown Copyright and this version of the document is my copyright (along with the Crown Copyright) in much the same way as a photograph would be. It should be noted that most of the pages are identifiable as having been processed by me. If you believe the original document to be under copyright, please contact me.

The document should have been downloaded from my website <https://blunham.com/Radar>, or any mirror site named on that site. If you downloaded it from elsewhere, please let me know (particularly if you were charged for it). You can contact me via my Genuki email page: <https://www.genuki.org.uk/big/eng/YKS/various?recipient=colin>

You may not copy the file for onward transmission of the data nor attempt to make monetary gain by the use of these files. If you want someone else to have a copy of the file, point them at the website (<https://blunham.com/Radar>). Please do not point them at the file itself as it may move or the site may be updated.

I put a lot of time into producing these files which is why you are met with this page when you open the file.

In order to generate this file, I need to scan the pages, split the double pages and remove any edge marks such as punch holes, clean up the pages, set the relevant pages to be all the same size and alignment. I then run Omnipage (OCR) to generate the searchable text and then generate the pdf file.

Hopefully after all that, I end up with a presentable file. If you find missing pages, pages in the wrong order, anything else wrong with the file or simply want to make a comment, please drop me a line (see above).

If you find the file(s) of use to you, you might like to make a donation for the upkeep of the website – see <https://blunham.com/Radar> for a link to do so.

Colin Hinson

In the village of Blunham, Bedfordshire, UK.

H. J. Tyson

RESTRICTED



**BASIC PRINCIPLES AND EXAMPLES
OF
TIME DOMAIN REFLECTOMETRY**

**CENTRAL SERVICING
DEVELOPMENT ESTABLISHMENT**

**ROYAL AIR FORCE
SWANTON MORLEY
NORFOLK.**

RESTRICTED

H. J. Tyson

INTRODUCTION

1. The information contained in the following note is additional technical information to supplement the Hewlett Packard Handbooks issued with the 10S/4935-99-956-8468 OSCILLOSCOPE SET CT 552.

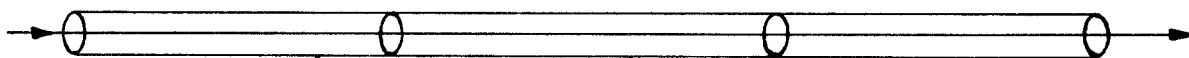
TYPICAL TDR DISPLAYS

1. Impedance Matching in co-ax. - Quarter Wave Transformers.

$Z_{in} = 50 \text{ ohms}$

$\frac{1}{4}$ wave length

$Z_{out} = 200 \text{ ohms}$



Cable Impedance = Z_o .

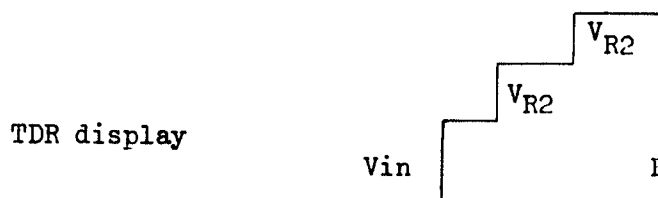
$Z_o = 50 \text{ ohms.}$

$Z_o = 100 \text{ ohms.}$

$Z_o = 200 \text{ ohms.}$

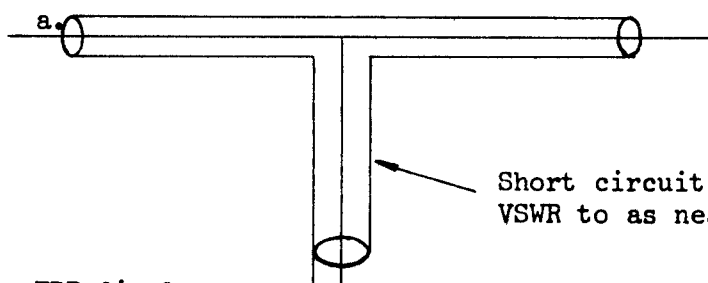
VSWR at optimum frequency may be 1.08:1

VSWR at another frequency may be 1.3:1



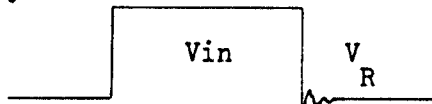
Total reflection
co-efficient = +0.6
Reflection co-efficient = $\frac{V_{R1} + V_{R2}}{V_{in}}$

Tuned stubs in co-axial Lines.

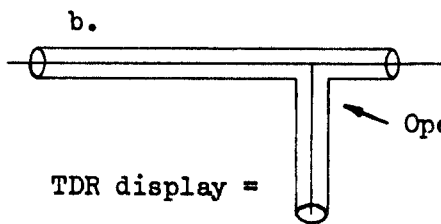


Short circuit stub used to reduce system VSWR to as near to 1:1 as possible.

TDR display =

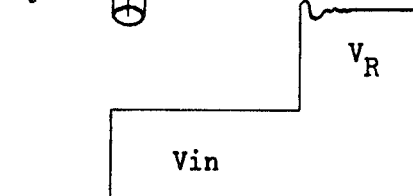


Reflection co-efficient = 1



Open stub

TDR display =

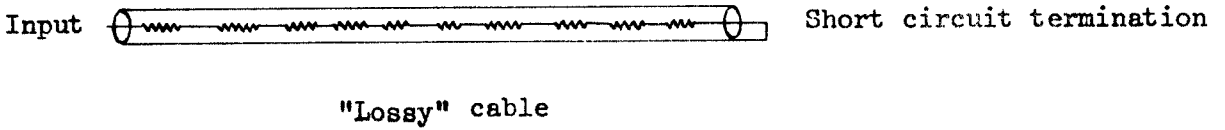


Reflection co-efficient = +1

NOTE: The reflection co-efficient is always 1 and cannot be altered by adjusting the length of the stubs, but the VSWR at the operating frequency can be alter ub length.

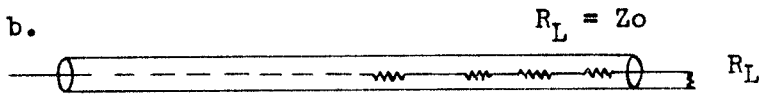
3. Attenuation (Simple)

a.



$$\text{Two way attenuation} = 20 \log \frac{V_{IN}}{V_R} = 6\text{db}$$

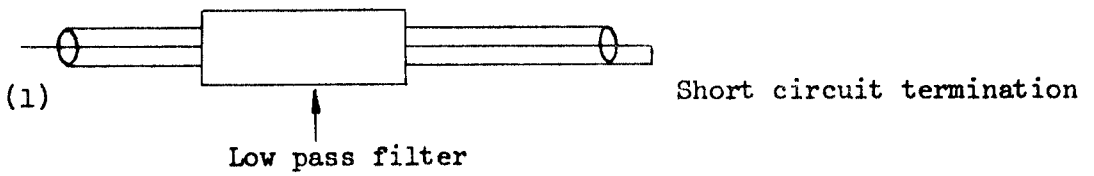
Therefore cable attenuation = 3db



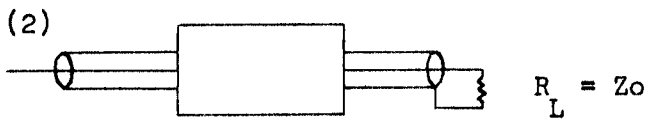
The degree of attenuation is NOT displayed.

4. Attenuation (Frequency Conscious).

a.

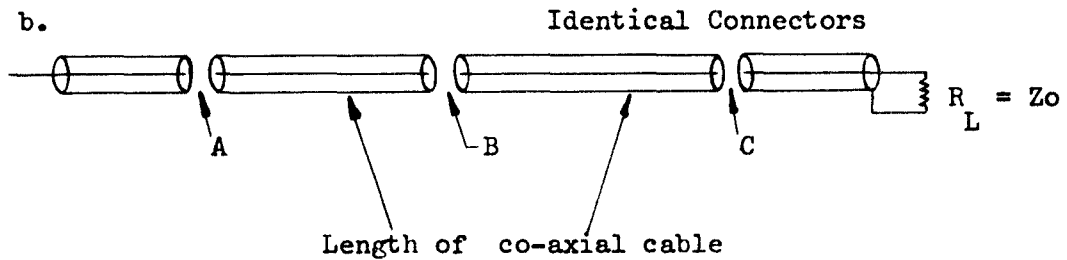


eg = 3db at 100 Mc/s and -30db at 200 Mc/s and above.



NOTE: A co-axial cable is effectively low pass filter.

eg: Transradio RG-58 c/u co-axial cable, Attenuation per 100 ft:
 0.42 db at 1 Mc/s: 1.6 db at 10 Mc/s: 6.2 db at 100 Mc/s:
 24 db at 1,000 M/cs: 45 db at 3,000 Mc/s.



TDR displays:

(1) reflection from A



reflection from small inductive mismatch in connector

(2) reflection from B



(3) reflection from C



Because the co-axial cable is an effective low pass filter the measurement bandwidth reduces throughout the system. Therefore the reflections from 'distant' components that cause high mismatch at SHF, may be smaller than the reflections from the strands of wire of the outer brading of the co-axial at the input end of a system.

5. The comments in this note should not be taken as criticisms of the Time Domain Reflectometer as a test instrument. It is a very effective instrument when used on LF to UHF co-axial systems. This note illustrates some of the differences between broad band and discrete frequency testing.

SOME THEORETICAL TIME DOMAIN REFLECTOMETER DISPLAYS

1. The Characteristic Impedance of any cable, can be computed in terms of the voltage of the step appearing on the TDR oscilloscope before, and after the cable has been connected, ie:

If: E_1 = Incident voltage of step

Z_1 = Characteristic Impedance of cable

Z_0 = Output Impedance of Step generator

E_s = Voltage of step source.

Then: $E_1 = \frac{Z_L E_s}{Z_0 + Z_L}$ (See figs 1)

2. The incident step voltage is propagated down the co-axial cable and will be reflected from any discontinuities and from the cable termination.

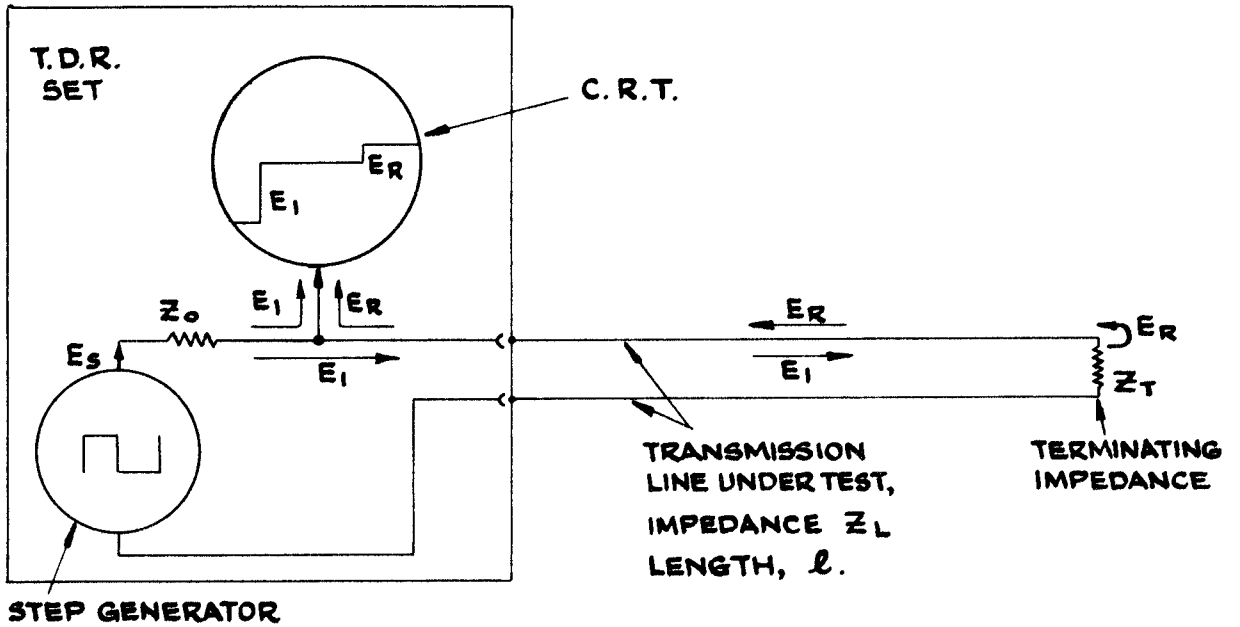
The magnitude shape and sense of the reflection will depend on the nature of the discontinuities and will appear on the display screen of the TDR set, delayed from the incident step by a time equal to the propagation delay of the co-axial cable from the source to the discontinuity and return (Return path delay). The reflection is added algebraically to the incident step voltage. (fig 2).

3. If the co-axial cable is terminated by an open circuit the reflected step voltage will be equal in amplitude to the incident voltage and will be positive. If terminated by a short circuit the reflection will be negative.

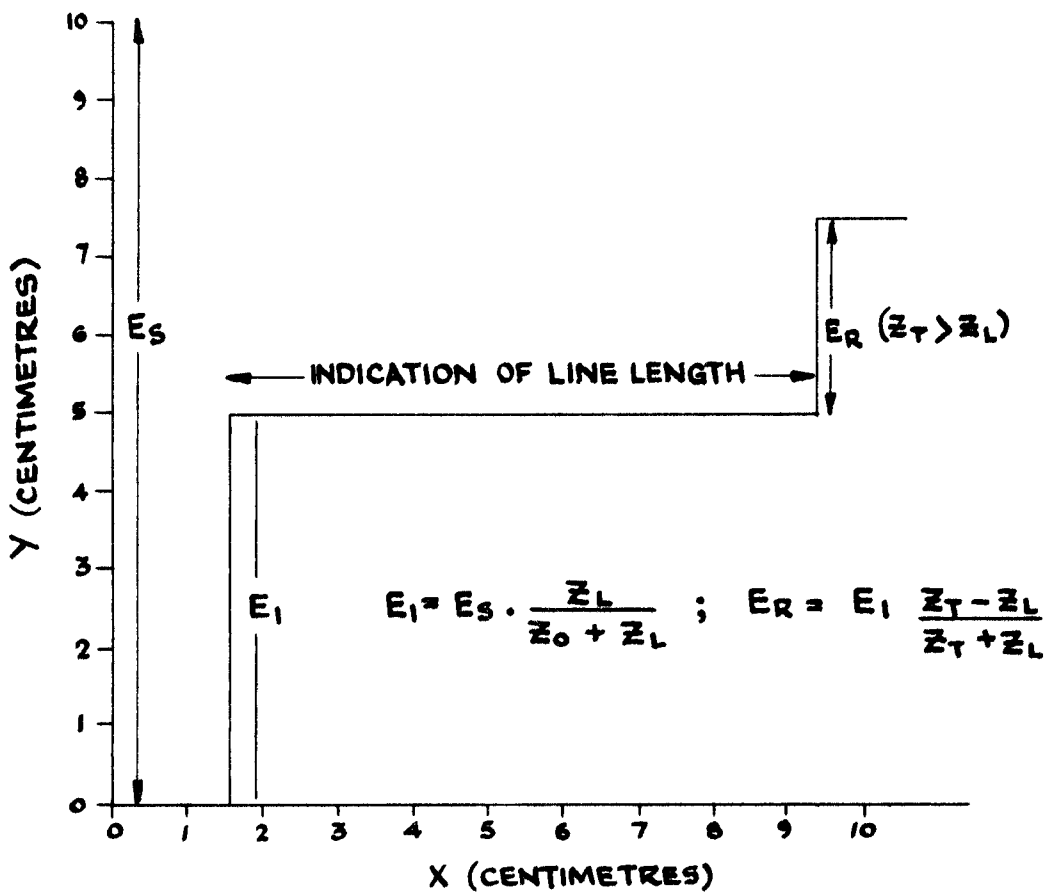
If the termination is an impedance matching that of the cable at all frequencies, no reflection will result. The position of a perfectly matched termination will not be apparent. (fig 3).

4. Assume a cable with a perfectly matched load, but somewhere along its length is a component causing a small standing wave ratio (SWR), such as a co-axial plug/socket interconnection, this will cause a proportion of the incident step to be reflected back, and will show on the TDR screen as a small pulse, either positive or negative depending on whether it is caused by series Inductance or parallel capacitance. The amplitude of the reflection is proportional to the degree of SWR. (fig 4).

5. In the case of a resonant aerial, the arrival of the step at the aerial, will excite it into resonance. This resonance will be transmitted back to the TDR and displayed as an exponentially decaying sine wave. If the aerial has an impedance matching transformer, it will appear as a short circuit, after the disturbance due to its resonant excitation; if it is fed directly to the aerial, it will appear as an open circuit. (fig 5).

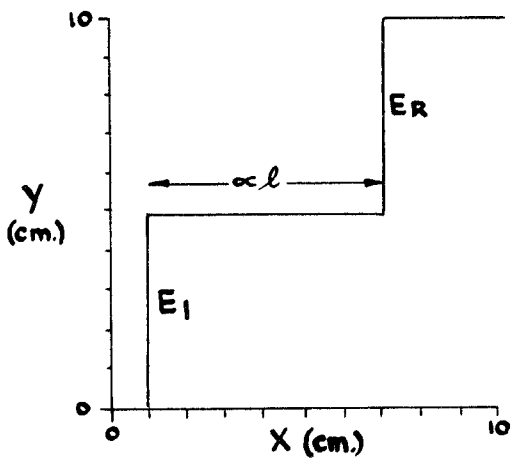


TIME DOMAIN REFLECTOMETER ~ BLOCK DIAGRAM. FIG. 1A.



T. D. R. DISPLAY.

FIG. 1B.



C.R.T. DISPLAY

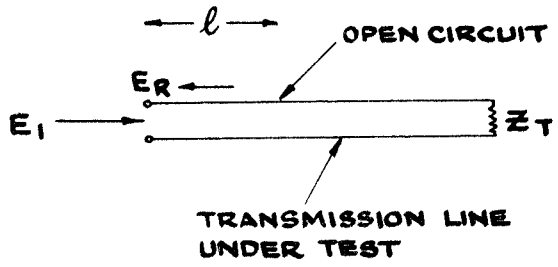


FIG. 2.

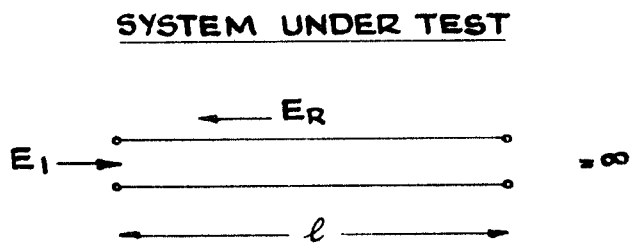
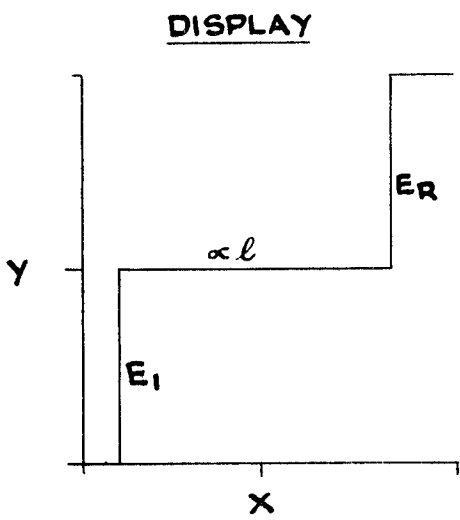


FIG. 3A.

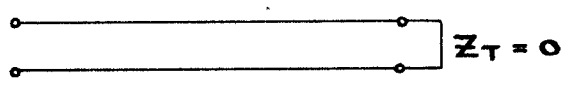
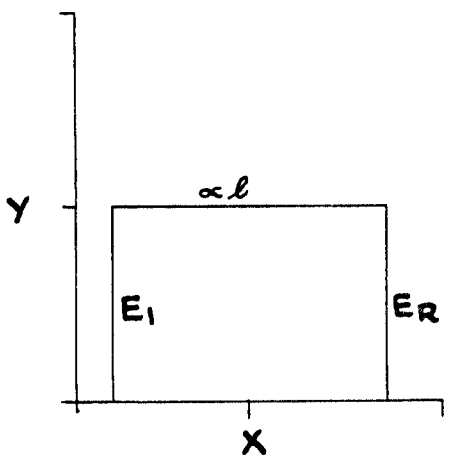
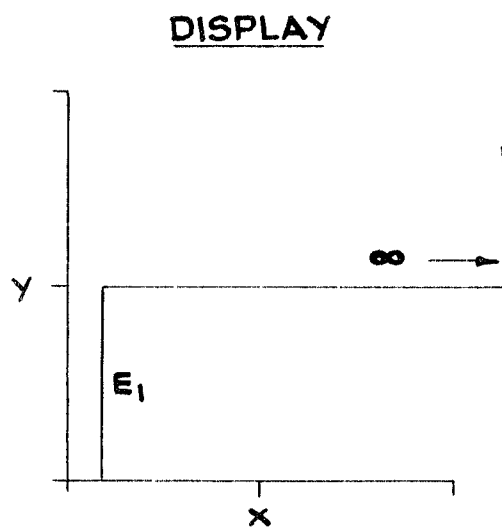


FIG. 3b.



SYSTEM UNDER TEST

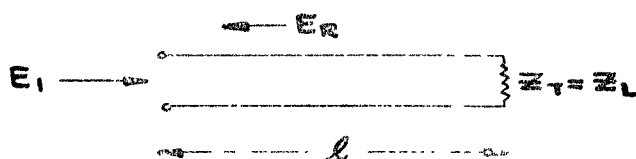


FIG. 3c

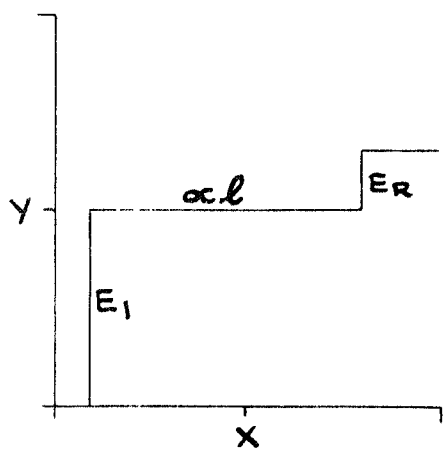


FIG. 3D

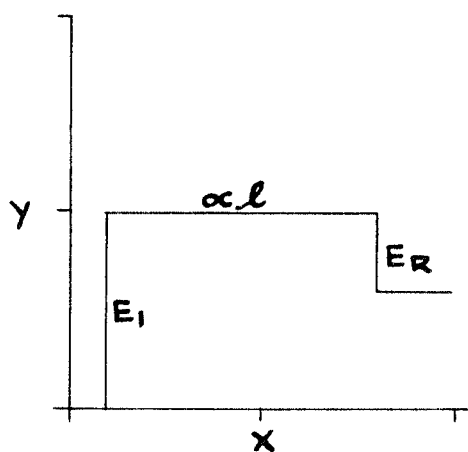


FIG. 3E

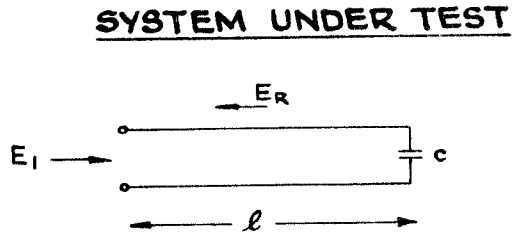
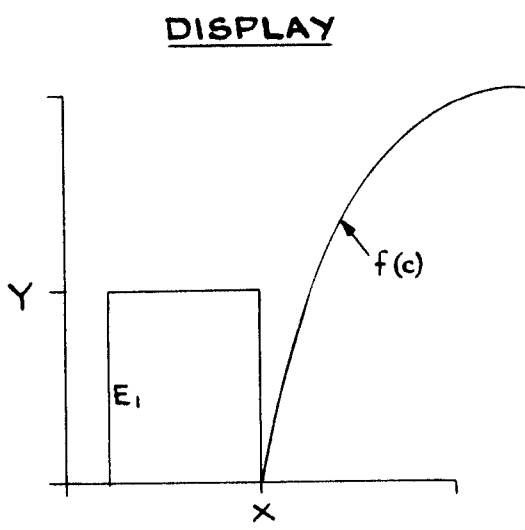
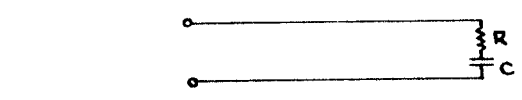
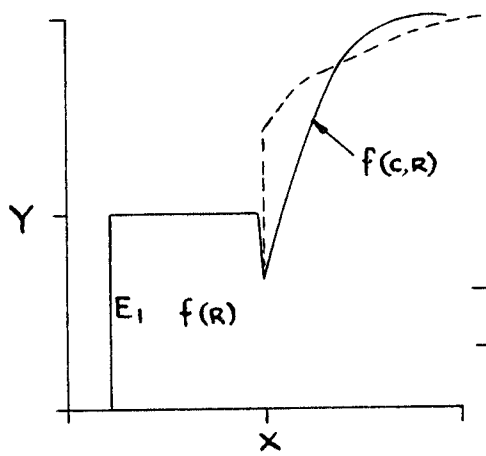
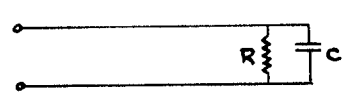
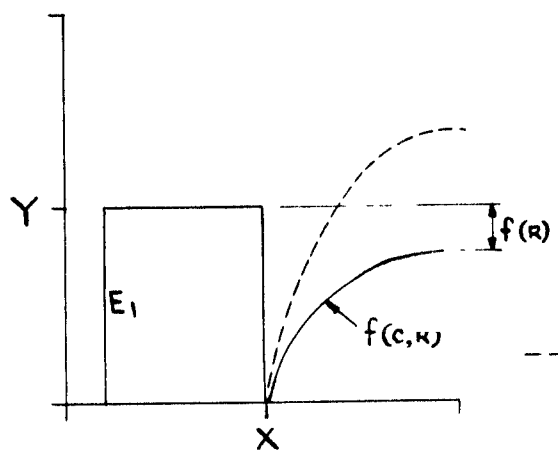


FIG. 3 F.



— $R < Z_L$
 - - - $R > Z_L$

FIG. 3 G.



- - - $R > Z_L$

FIG. 3 H.

DISPLAY

SYSTEM UNDER TEST

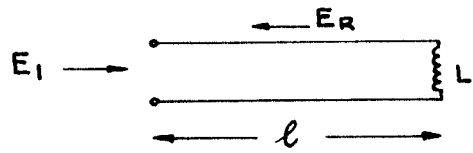
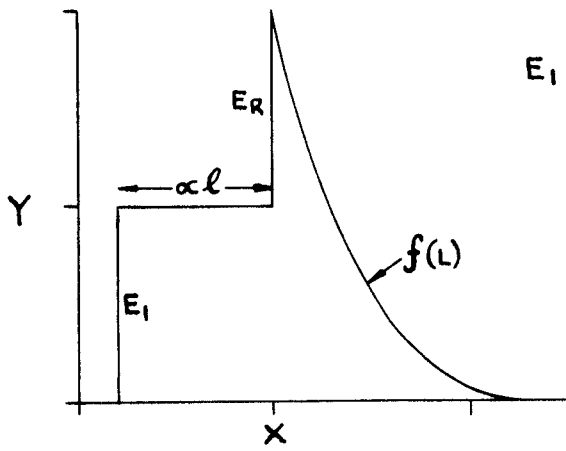
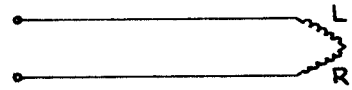
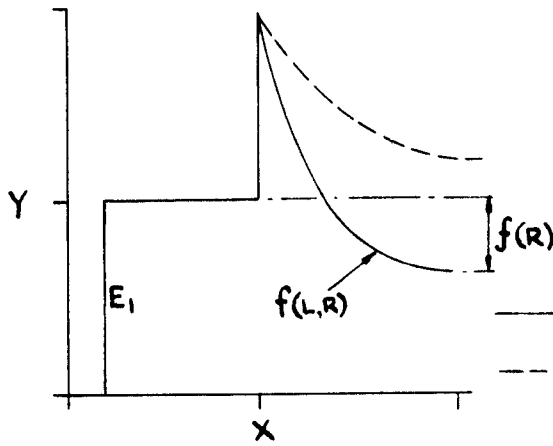
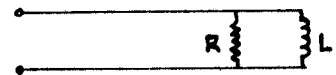
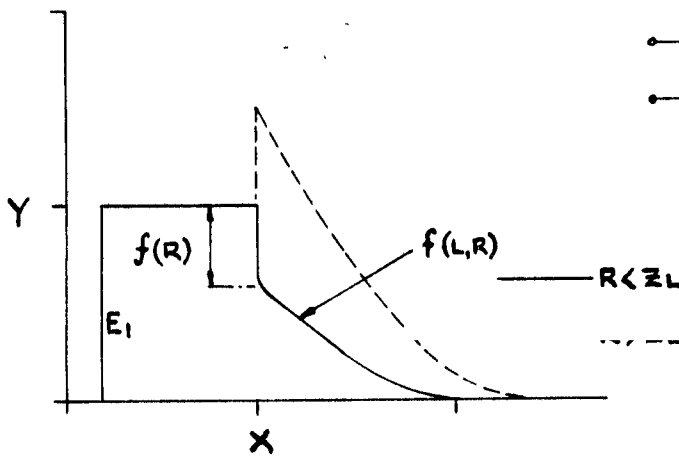


FIG. 3J



— $R < Z_L$
 - - - $R > Z_L$

FIG. 3K



— $R < Z_L$
 - - -

FIG. 3L

DISPLAY

SYSTEM UNDER TEST

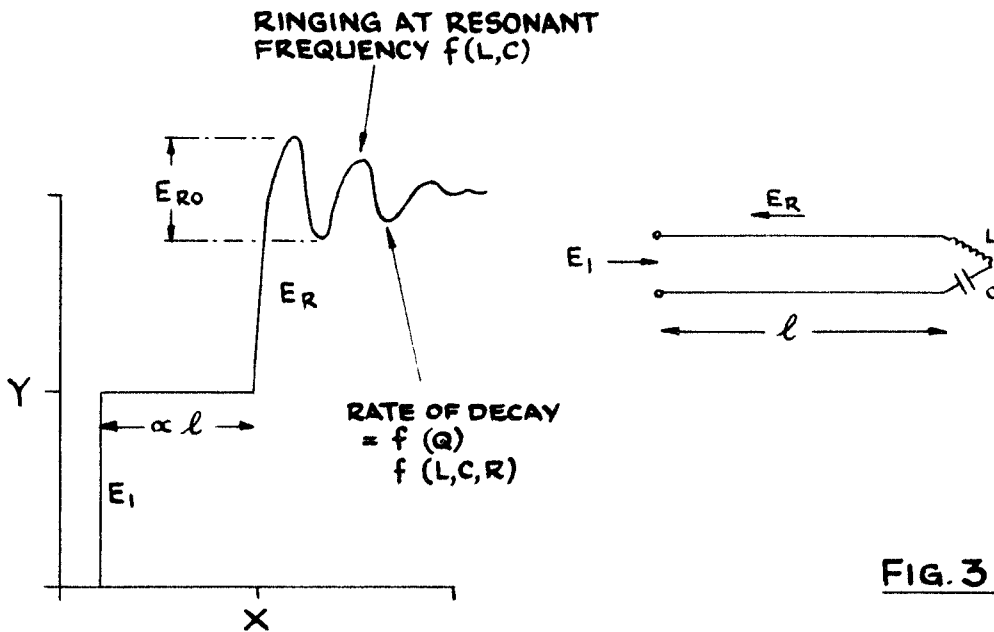


FIG. 3M

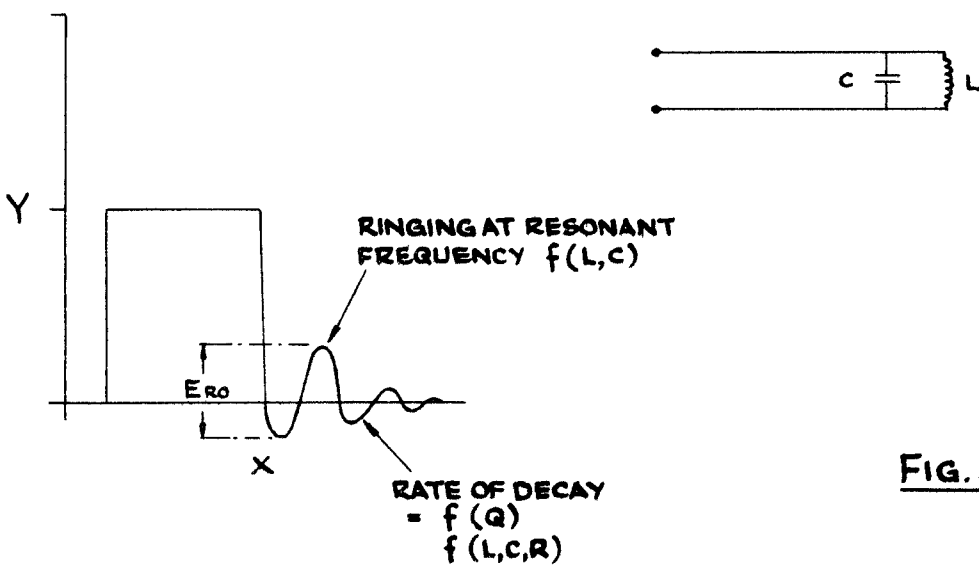


FIG. 3N.

THE AMPLITUDE OF THE RESONANT OSCILLATIONS, E_{RO} IS DEPENDANT UPON:-

RESONANT FREQUENCIES, CIRCUIT IMPEDANCES, RESONANT CIRCUIT 'Q',
CABLE CHARACTERISTICS, RISE TIMES, ETC.

MATHEMATICAL EQUATIONS FOR THE VARIOUS FUNCTIONS CAN BE FOUND IN:-

HEWLETT - PACKARD - APPLICATION NOTE 62
TIME DOMAIN REFLECTOMETRY

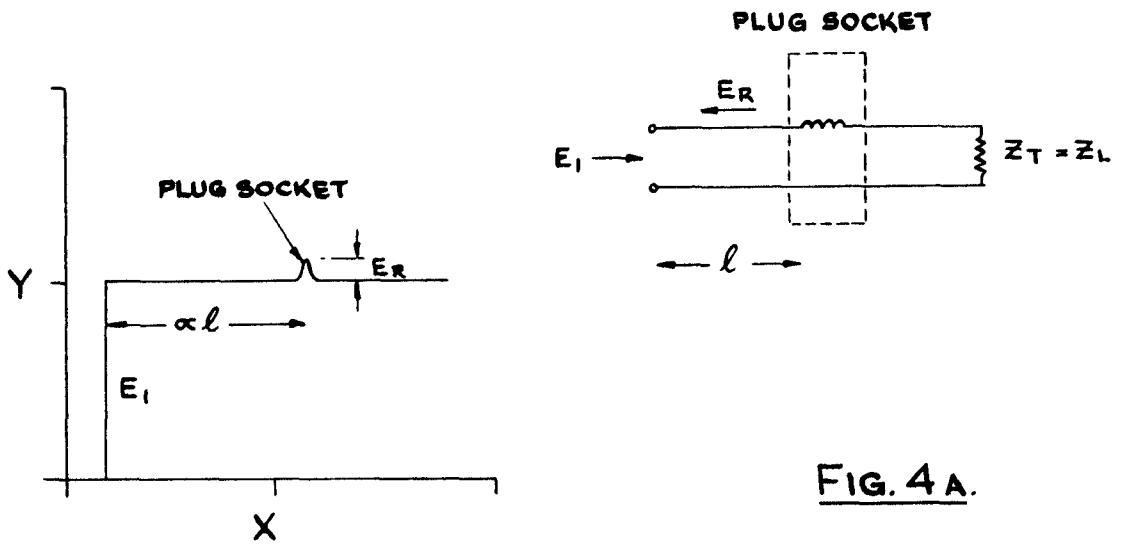


FIG. 4A.

REFLECTION COEFFICIENT, ρ :- $\rho = \frac{E_R}{E_I} = \frac{Z_T - Z_L}{Z_T + Z_L}$

STANDING WAVE RATIO (S.W.R.):-

$$\text{S.W.R.} = \frac{1 + (\rho)}{1 - (\rho)}$$

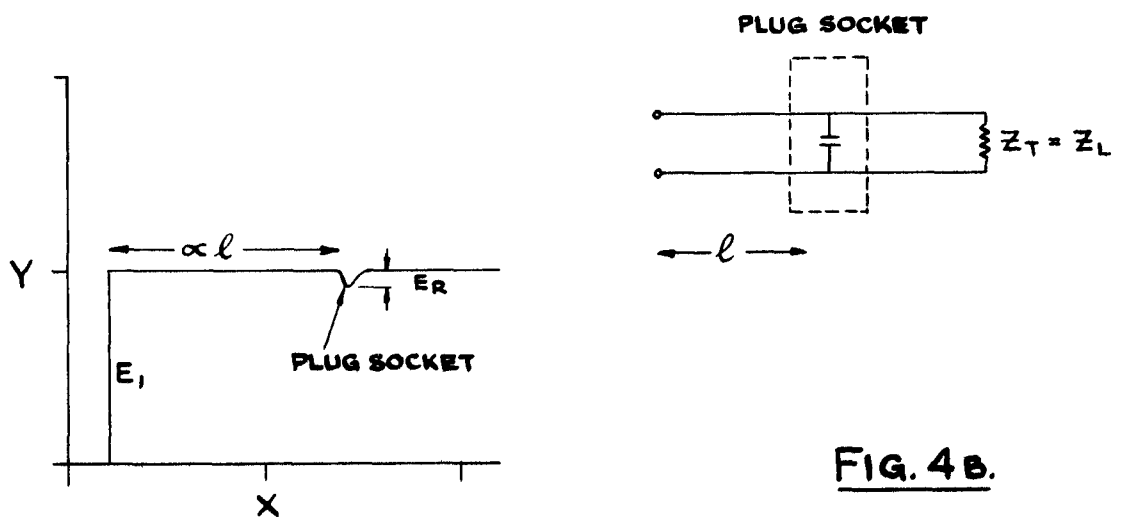


FIG. 4B.

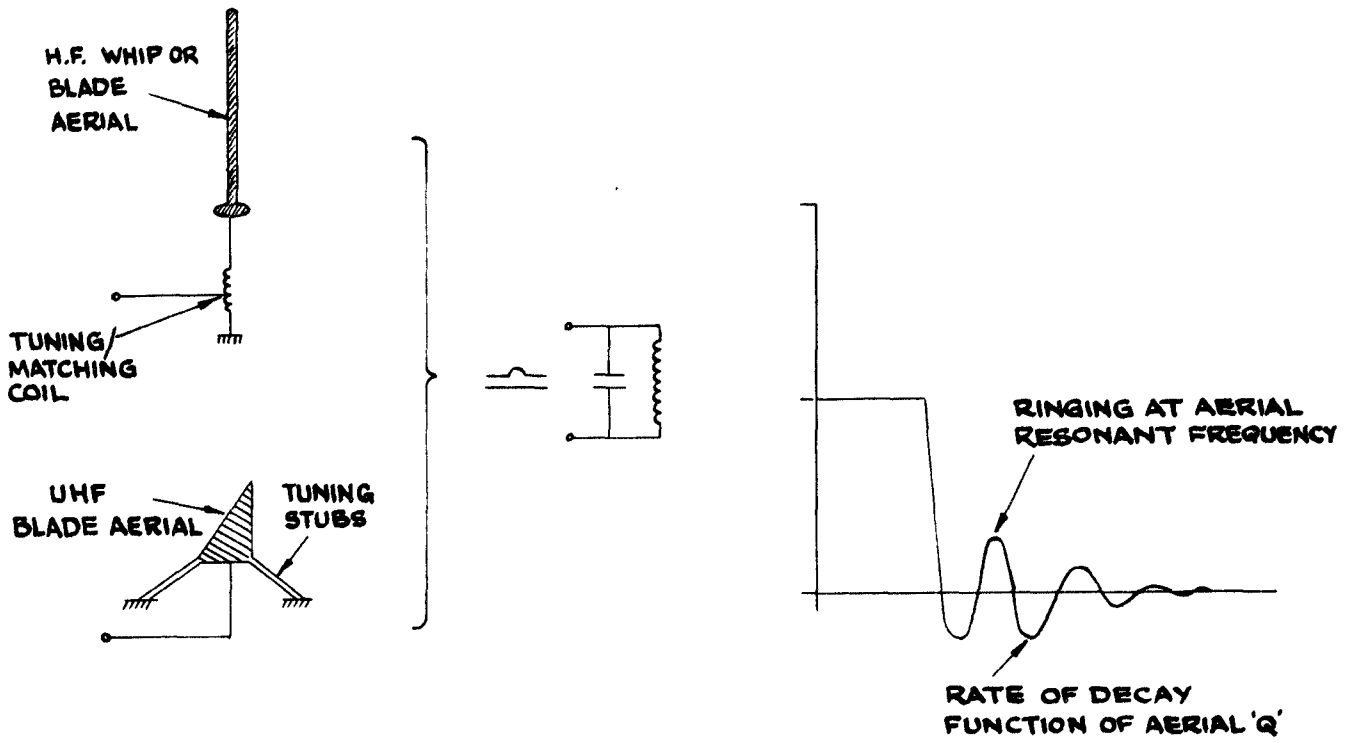


FIG. 5A.

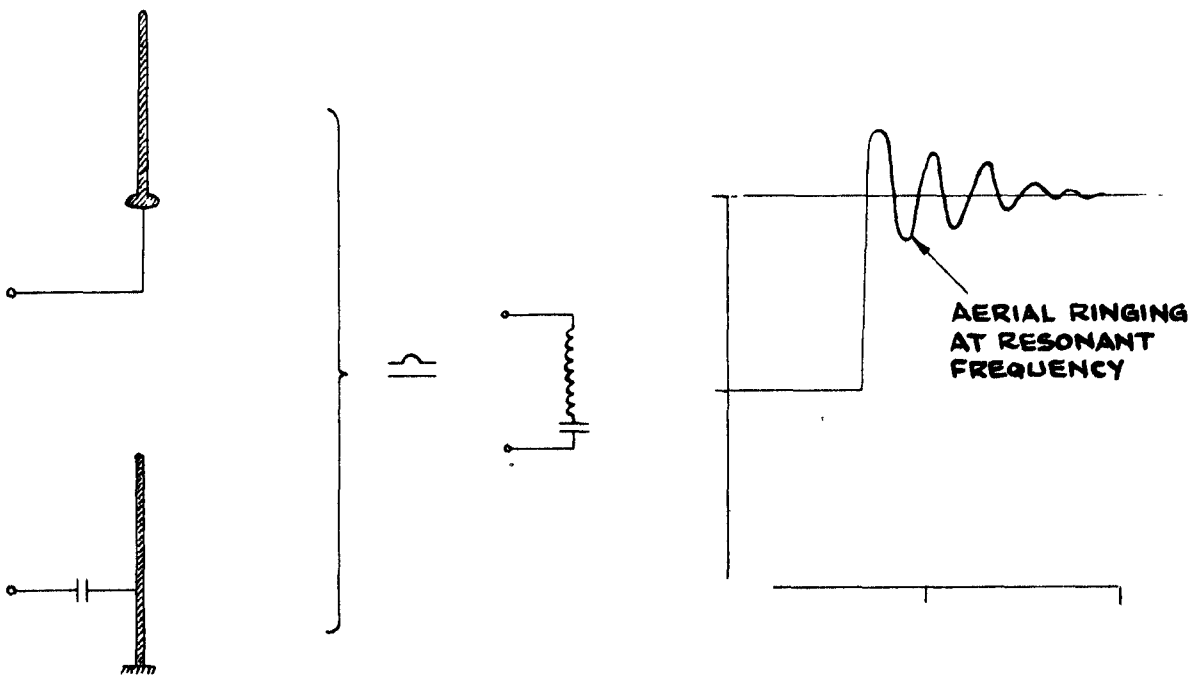
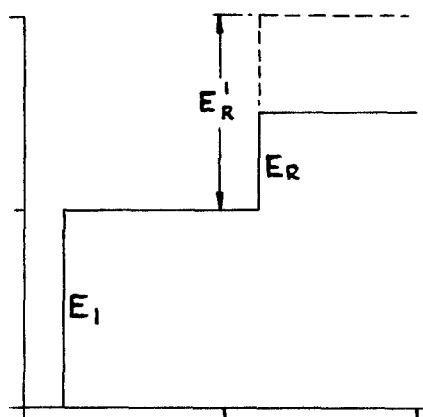


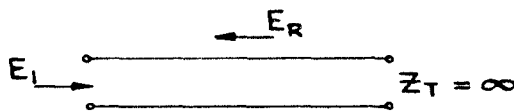
FIG. 5B.

BROAD BAND
ATTENUATION MEASUREMENT

DISPLAY

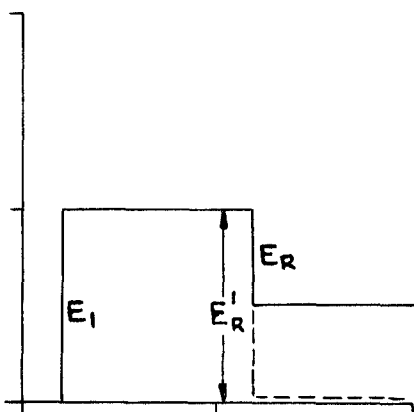


SYSTEM UNDER TEST



$$\begin{aligned} \text{ATTENUATION} &= 10 \log \left(\frac{E_R'}{E_R} \right) \\ &= 10 \log \left(\frac{E_I}{E_R} \right) \end{aligned}$$

FIG. 6 A



$$\begin{aligned} \text{ATTENUATION} &= 10 \log \left(\frac{E_R'}{E_R} \right) \\ &= 10 \log \left(\frac{E_I}{E_R} \right) \end{aligned}$$

FIG. 6 B.

BROAD BAND ATTENUATION IS CALCULATED

$$\text{FROM:- } \frac{1}{2} \left[20 \text{ LOG } \left(\frac{E_R'}{E_R} \right) \right] = 10 \text{ LOG } \left(\frac{E_R'}{E_R} \right)$$

WHERE E_R' IS THE VOLTAGE THAT WOULD HAVE BEEN REFLECTED THROUGH A CABLE OF ZERO LOSS, AND E_R IS THE ACTUAL VOLTAGE MEASURED.

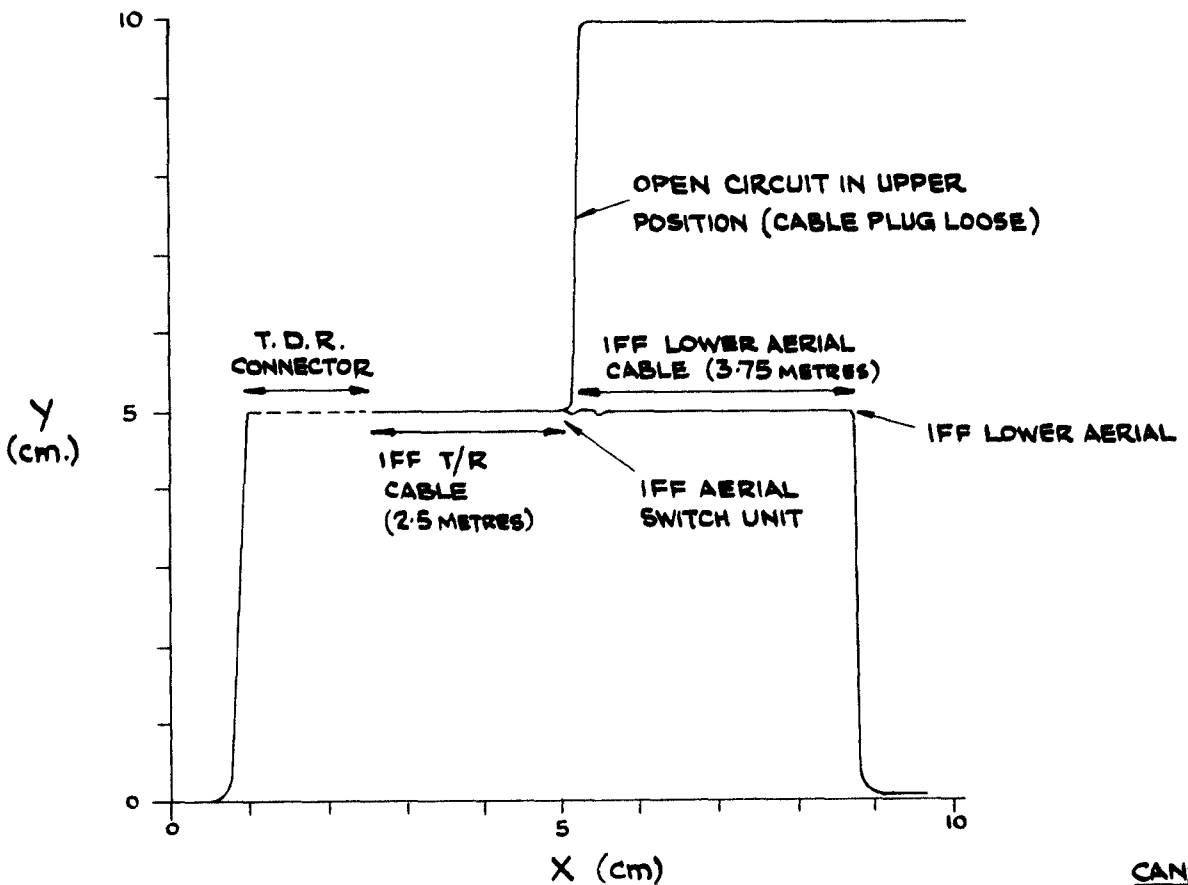
MEASUREMENTS ARE USUALLY MADE WITH ZERO (SHORT CIRCUIT) OR INFINITE (OPEN CIRCUIT) IMPEDANCE TERMINATIONS, AS E_R' IS THEN KNOWN ($E_R' = E_I$)

BROAD BAND ATTENUATION IS DISPLAYED AS A RESISTING TERMINATION (SEE FIGS 3c, 3d, 3e). THEREFORE LOW LOSS CABLES AND GENERAL RADIO CONNECTORS MUST BE USED TO CONNECT T M UNDER TEST (SEE ANNEX C).

TYPICAL TDR DISPLAYS IN AIRCRAFT

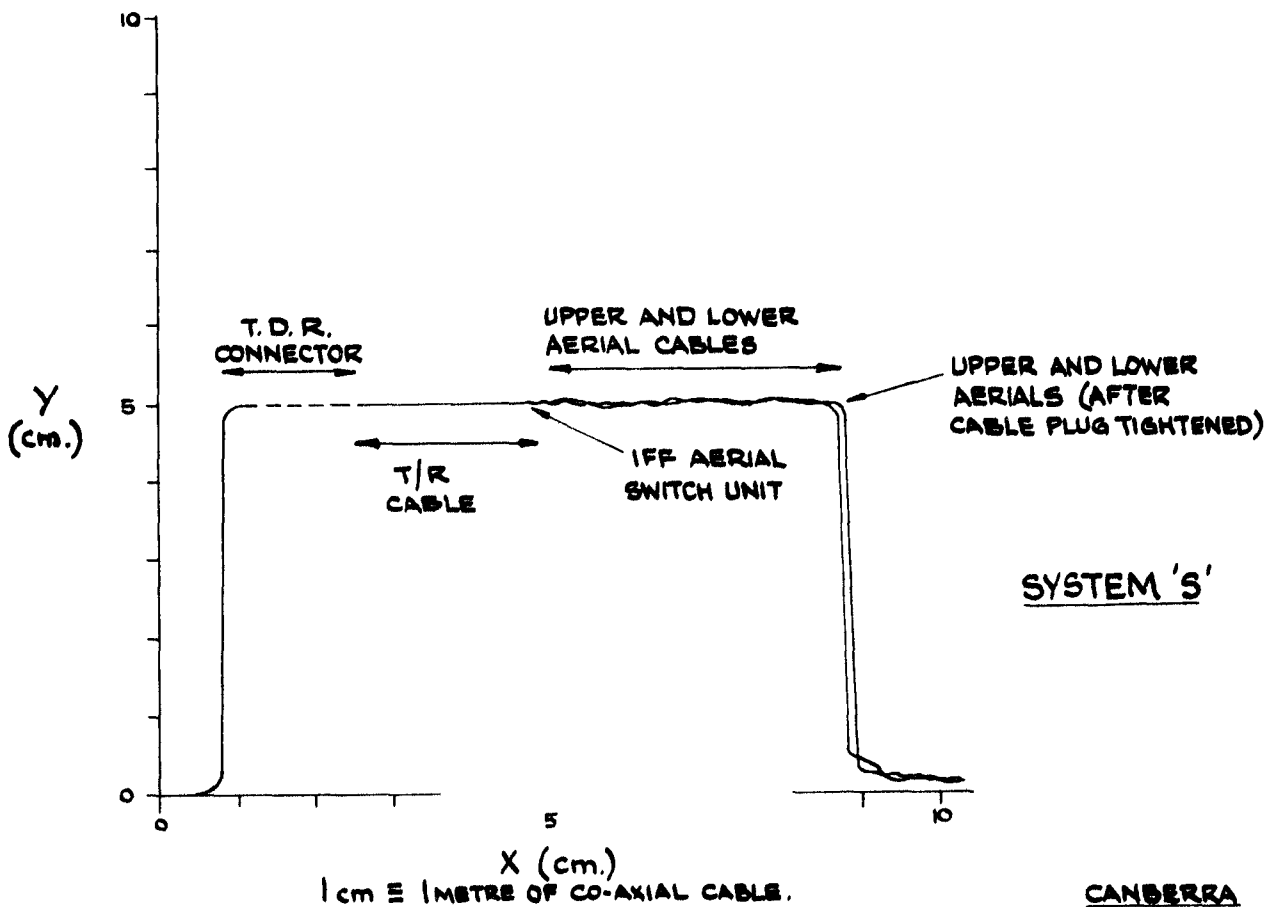
AIRCRAFT	FIG	OBSERVATION EQUIPMENT AND ACTION TAKEN	SERVICEABILITY
Canberra IFF	1	Open circuit at junction of the upper aerial cable and switch unit. (Plug loose)	U/S
Canberra IFF	2	Plug tightened. Result satisfactory	'S'
Lightning IFF	3	Satisfactory	'S'
Lightning IFF	4	Upper aerial gave a slightly shorter reflection fall time.	'S'
Lightning IFF	5	Slight difference was noted in switch unit upper and lower positions.	'S'
Lightning ILS	6	Localiser	'S'
Lightning ILS	7	Marker. The aerial was dismantled to observe terminating inductance, it was found to be a feature of design.	'S'
Lightning ILS	8	Glidepath	'S'
Varsity	9	Radio Compass Loop Aerial	'S'
Varsity	10	Sense aerial via filter unit (filter unit blocked the step input waveform). Unsatisfactory	-
Varsity	11	Direct to sense aerial Satisfactory	'S'
Varsity	12	Gee III	'S'
Varsity	13	Rebecca Satisfactory	'S'
Varsity	14	Rebecca Satisfactory	'S'
Varsity	15	Rebecca Satisfactory	'S'
Varsity	16	Rebecca Satisfactory	'S'
Varsity	17	VHF Satisfactory	'S'
Varsity	18	VHF Satisfactory	'S'
Britannia	19	IFF 10 Unsatisfactory	U/S
Britannia	20	IFF 10 lower aerial connected to short lead, 3db attenuation in aerial was measured.	'S'
Britannia	21	Serviceable aerial connected to cable, tested.	'S'
Britannia	22	Serviceable aerial connected to aircraft	'S'
Britannia	23	Aerial switch to flight position. Display indicated that at some part of the switching cycle the two _____ parallel. Lower aerial contacts were found not to be opening.	U/S
Britannia	24	VHF aerial	'S'
Britannia	25	STR 18 Aerial system Port High Z termination	U/S

AIRCRAFT	FIG	OBSERVATION EQUIPMENT AND ACTION TAKEN	SERVICEABILITY
Britannia	26	STR 18 Aerial System	'S'
Britannia	27	STR 18 Aerial Wires Port Hing & Termination	U/S
Britannia	28	STR 18 Aerial Wires	'S'
Comet	29	ILS Glide Path	'S'
Comet	30	Localiser	'S'
Comet	31	Marker	'S'
Comet	32	UHF	'S'
Vulcan	33	IFF 10 Aerial System lower Aerial	'S'
Vulcan	34	IFF 10 Upper and Flight positions	U/S
Vulcan	35	IFF Satisfactory Display	'S'
Vulcan	36	IFF Satisfactory Display	'S'
Vulcan	37	IFF Satisfactory Display	'S'



X (cm)
 1 cm = 1 METRE OF CO-AXIAL CABLE.
 N.B. THE ACTUAL T.D.R. CONNECTOR LENGTH WILL DEPEND ON ACTUAL CABLE IN USE

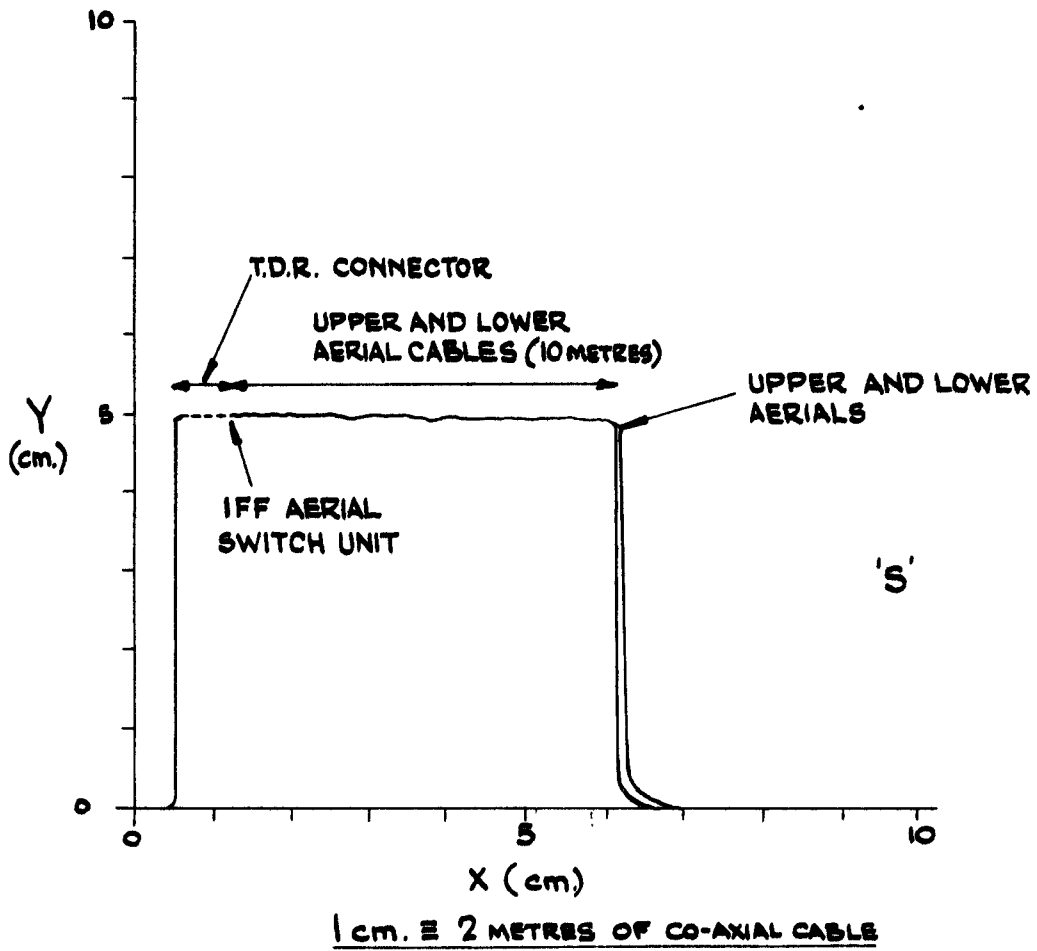
CANBERRA
FIG. 1.



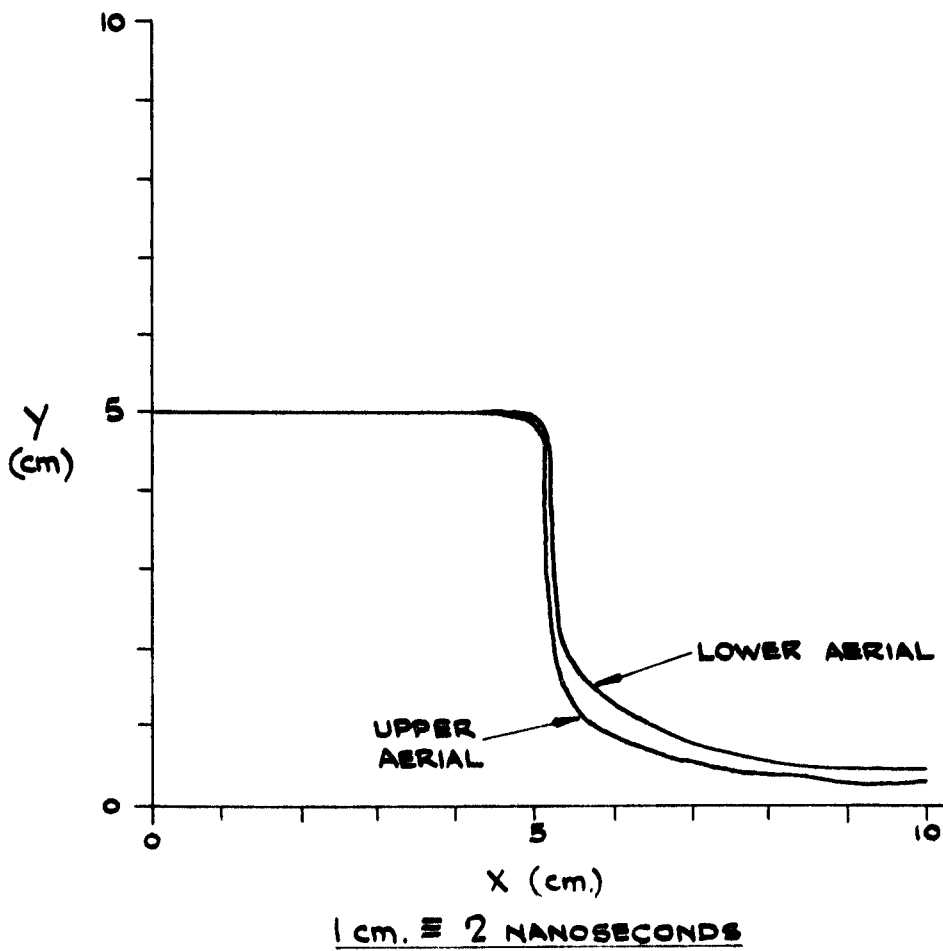
X (cm)
 1 cm = 1 METRE OF CO-AXIAL CABLE.

SYSTEM 'S'

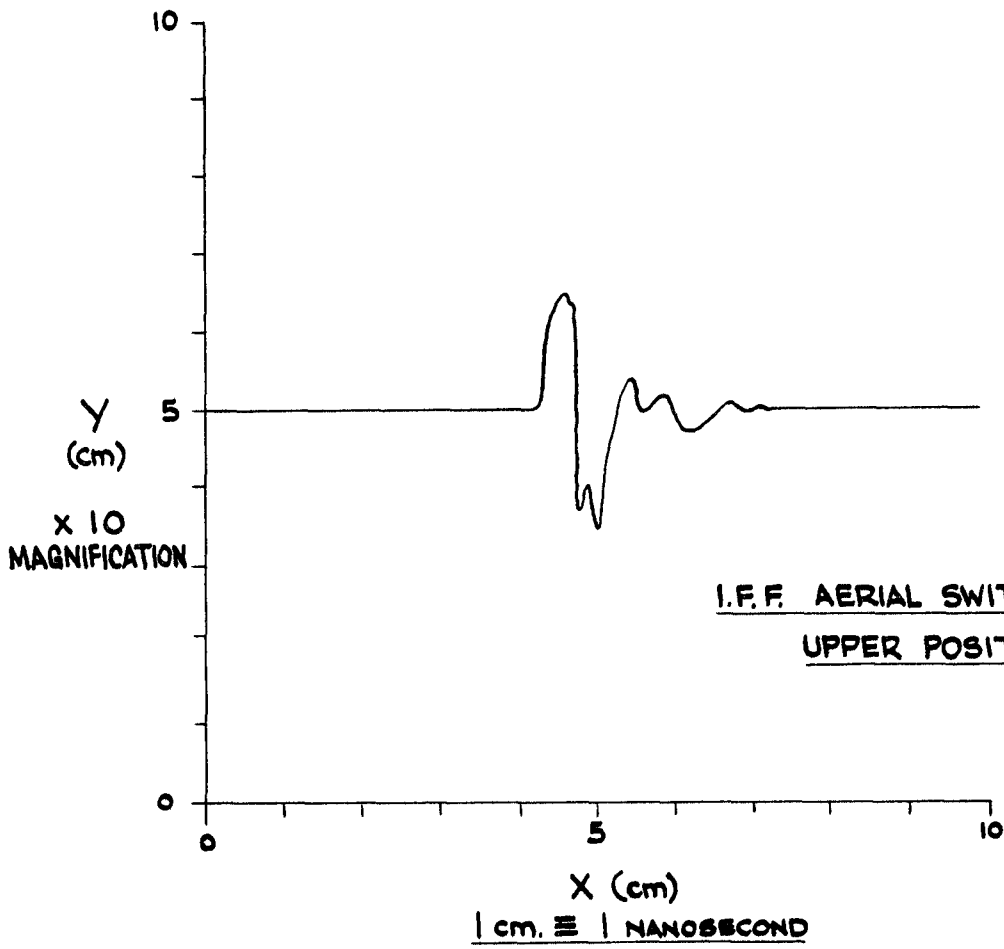
CANBERRA
FIG. 2.



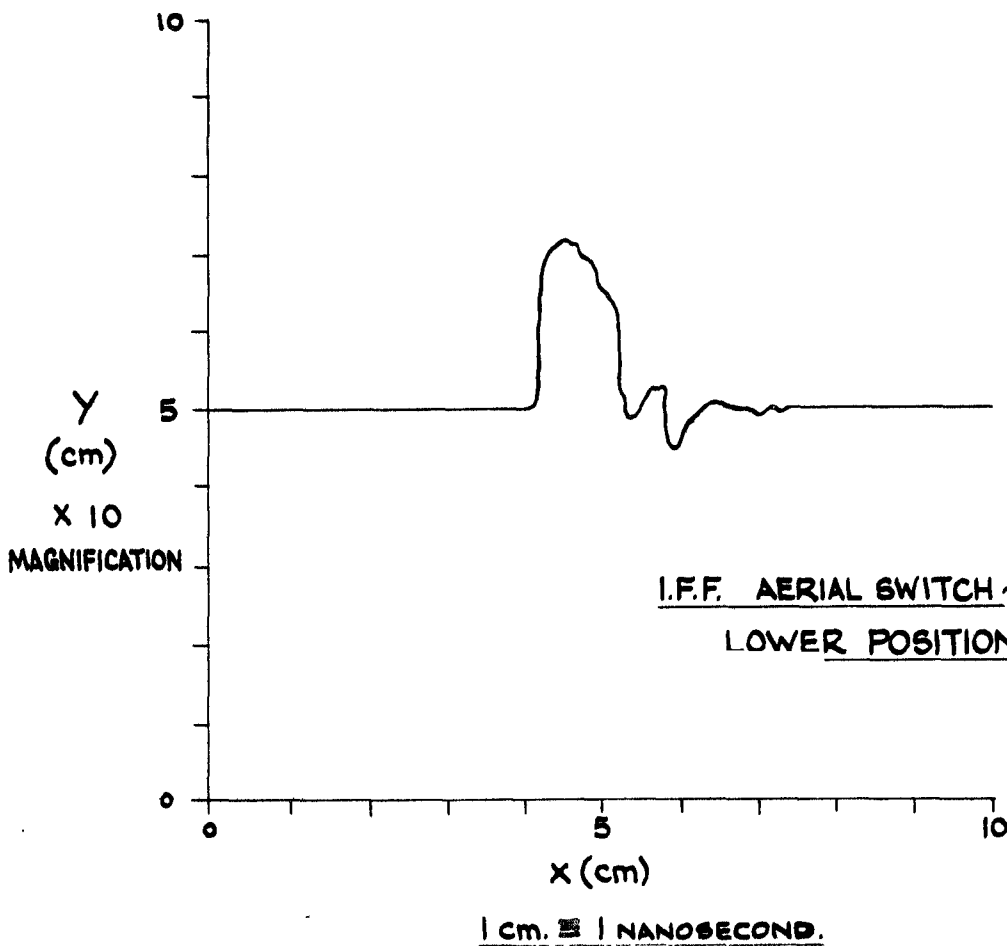
LIGHTNING F.M.K.3
FIG. 3



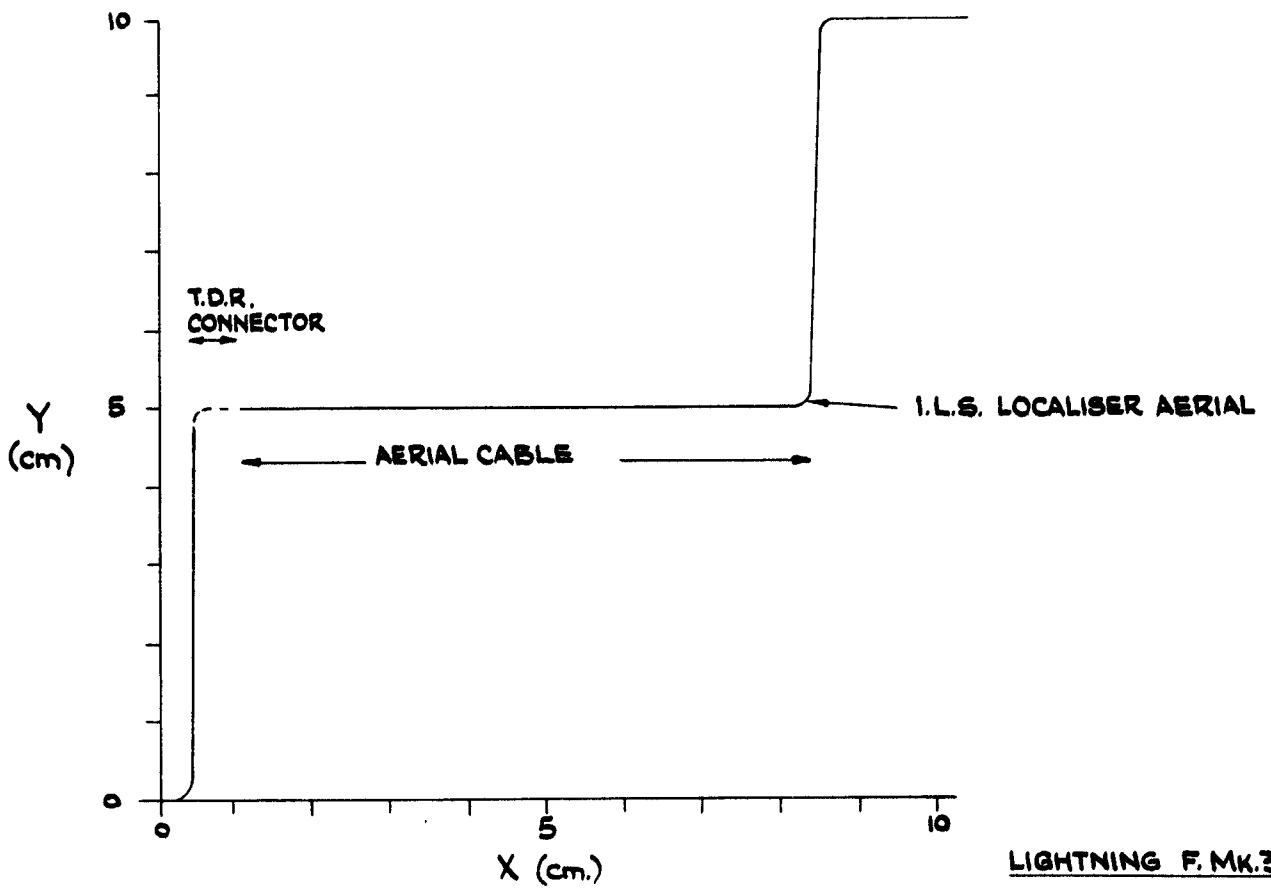
LIGHTNING F.M.K.3
FIG. 4.



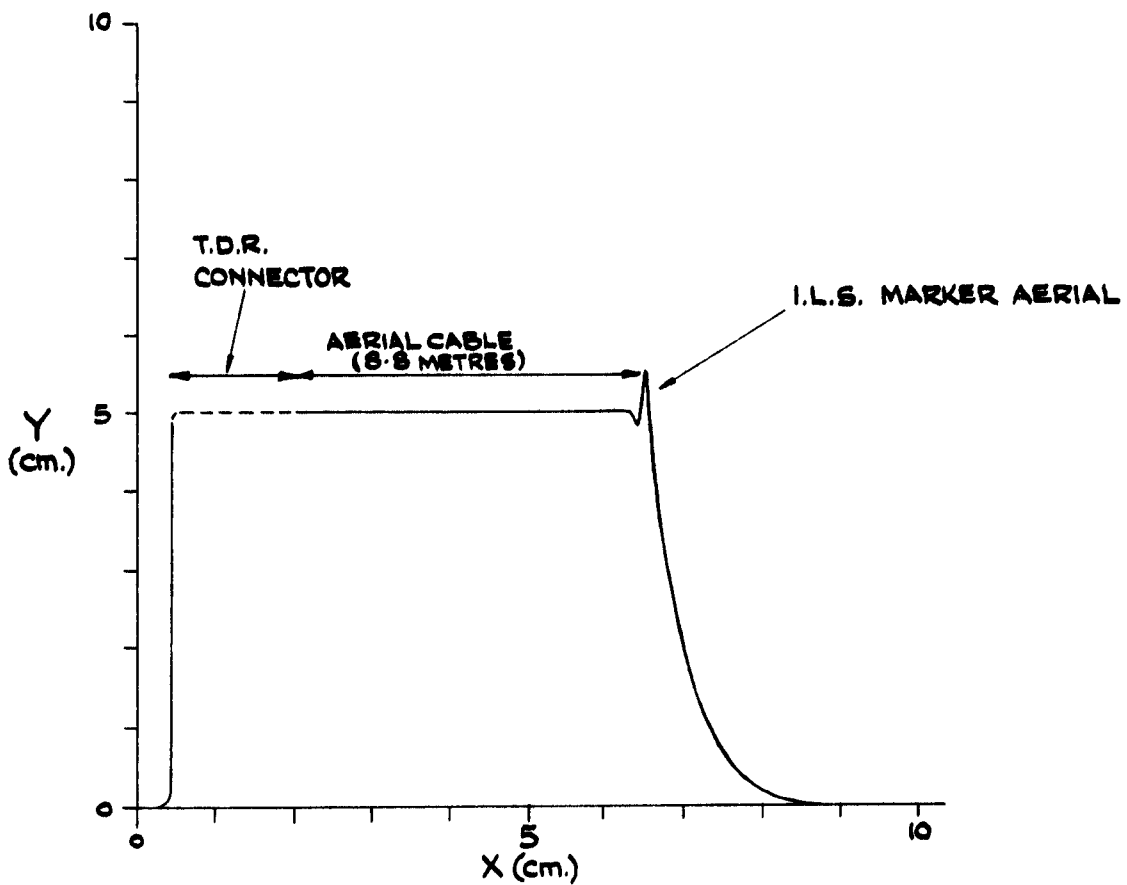
LIGHTNING F.MK.3
FIG. 5A.



LIGHTNING F.MK.3.
FIG. 5B.

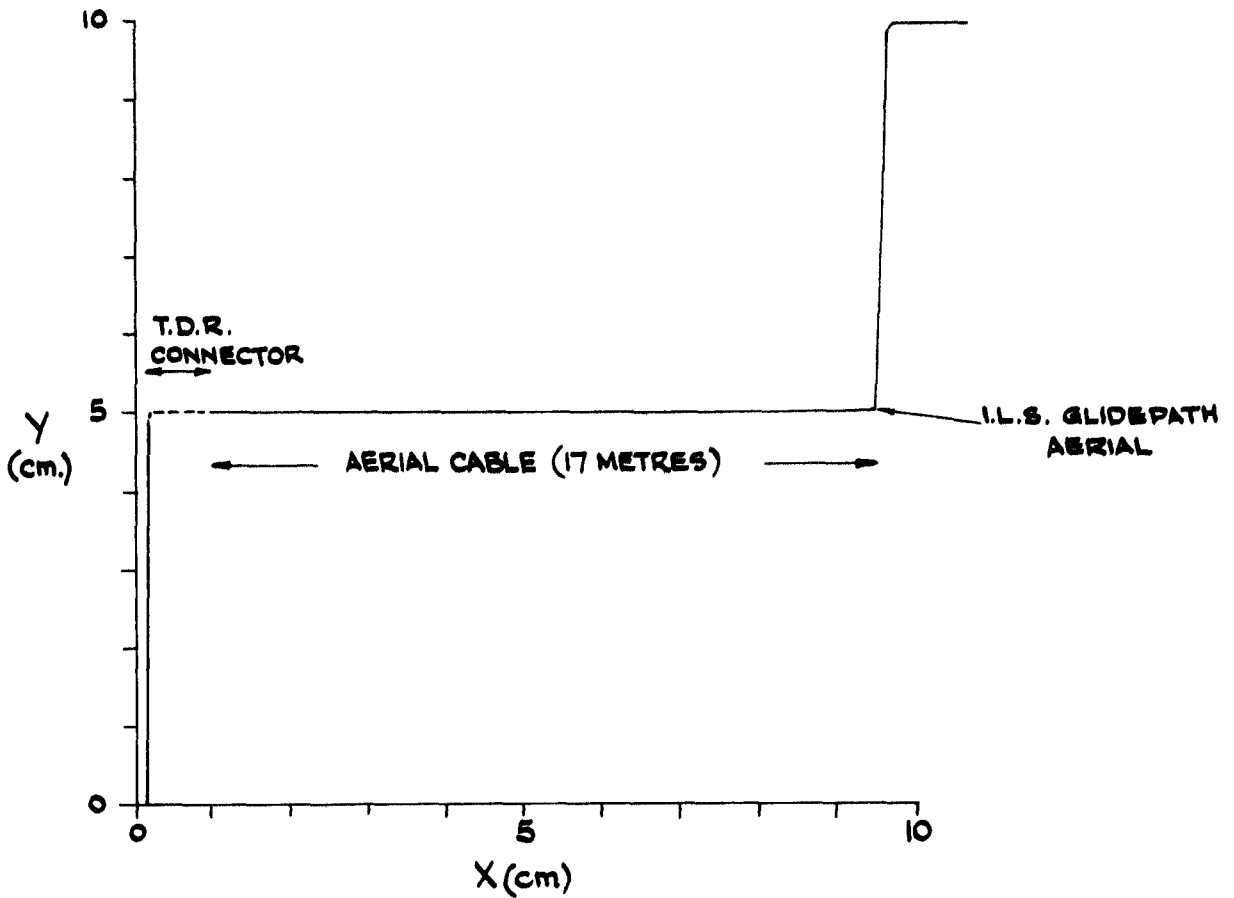


LIGHTNING F.MK.3
FIG. 6



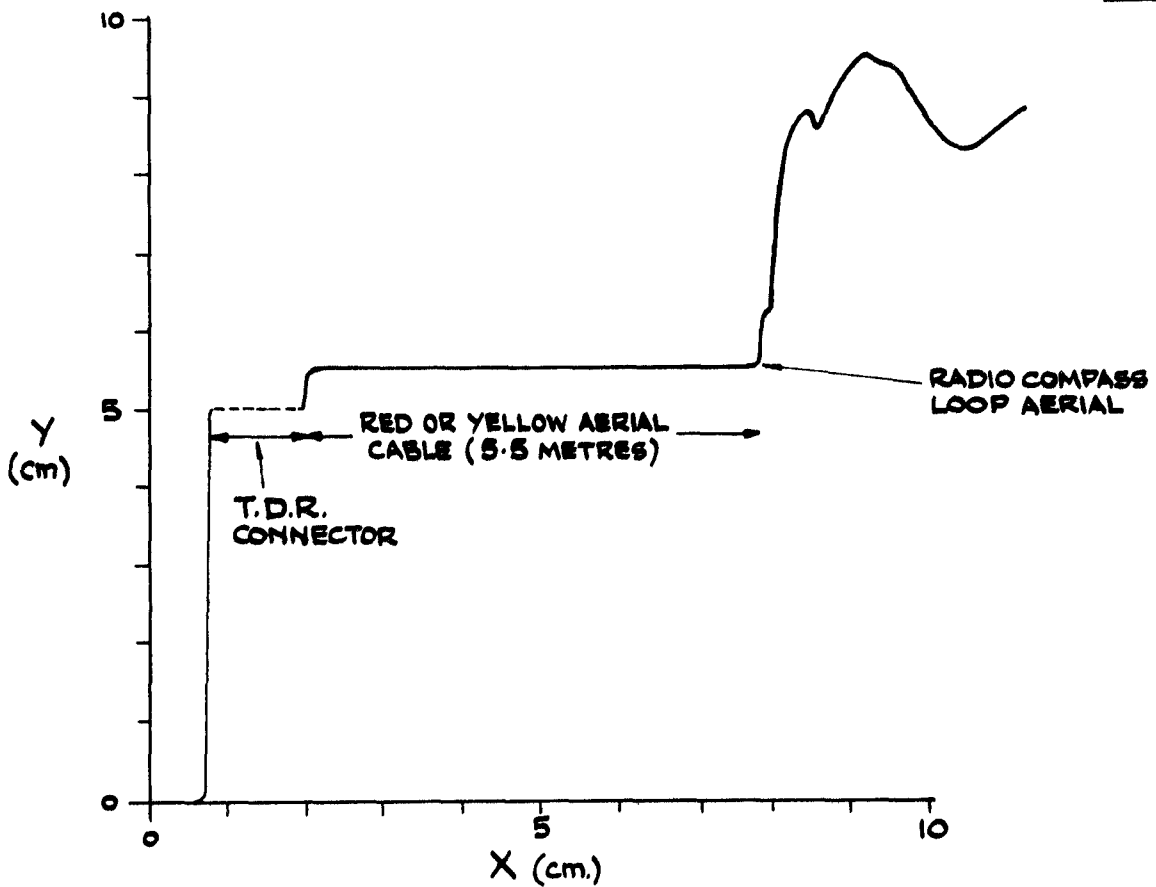
1 cm. ≡ 2 METRES OF CO-AXIAL CABLE.

LIGHTNING F.MK.3
FIG. 7.



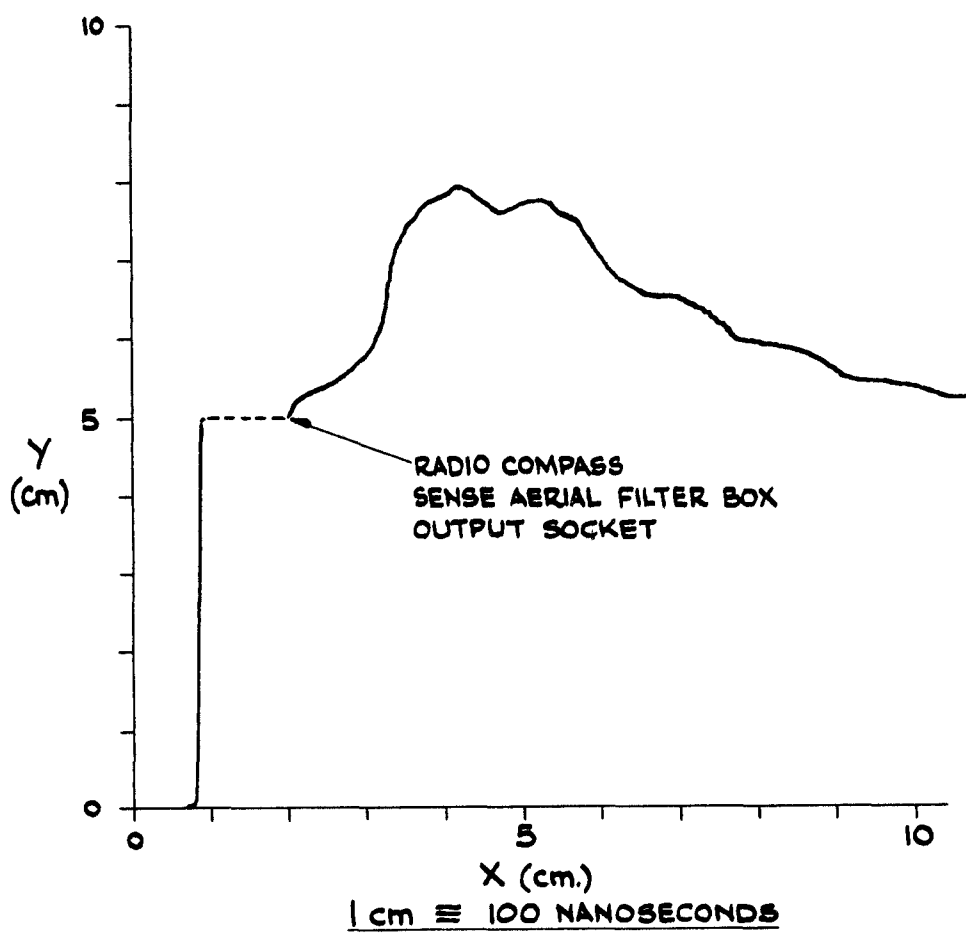
1 cm. \equiv 2 METRES OF CO-AXIAL CABLE.

LIGHTNING F. Mk.3
FIG. 8

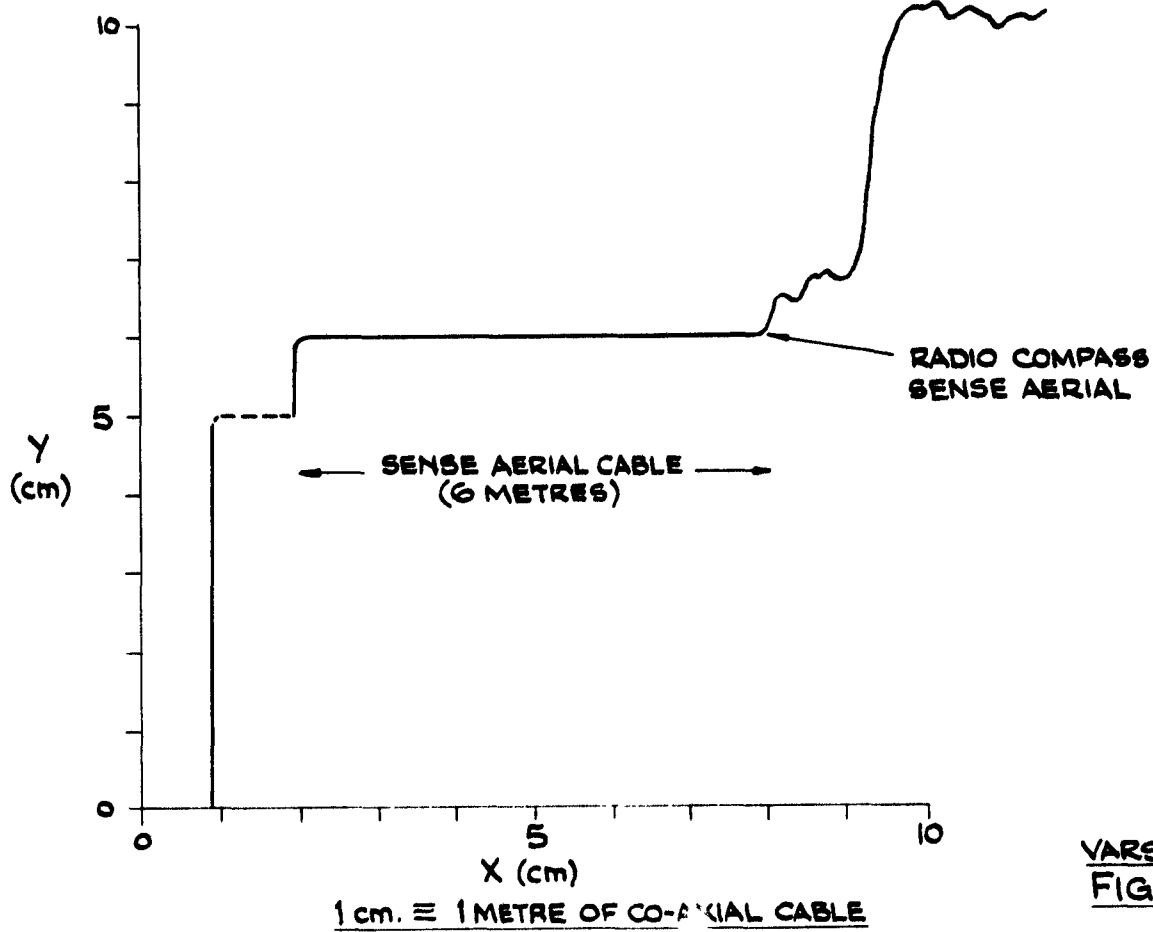


1 cm. \equiv 1 METRE OF CO-AXIAL CABLE.

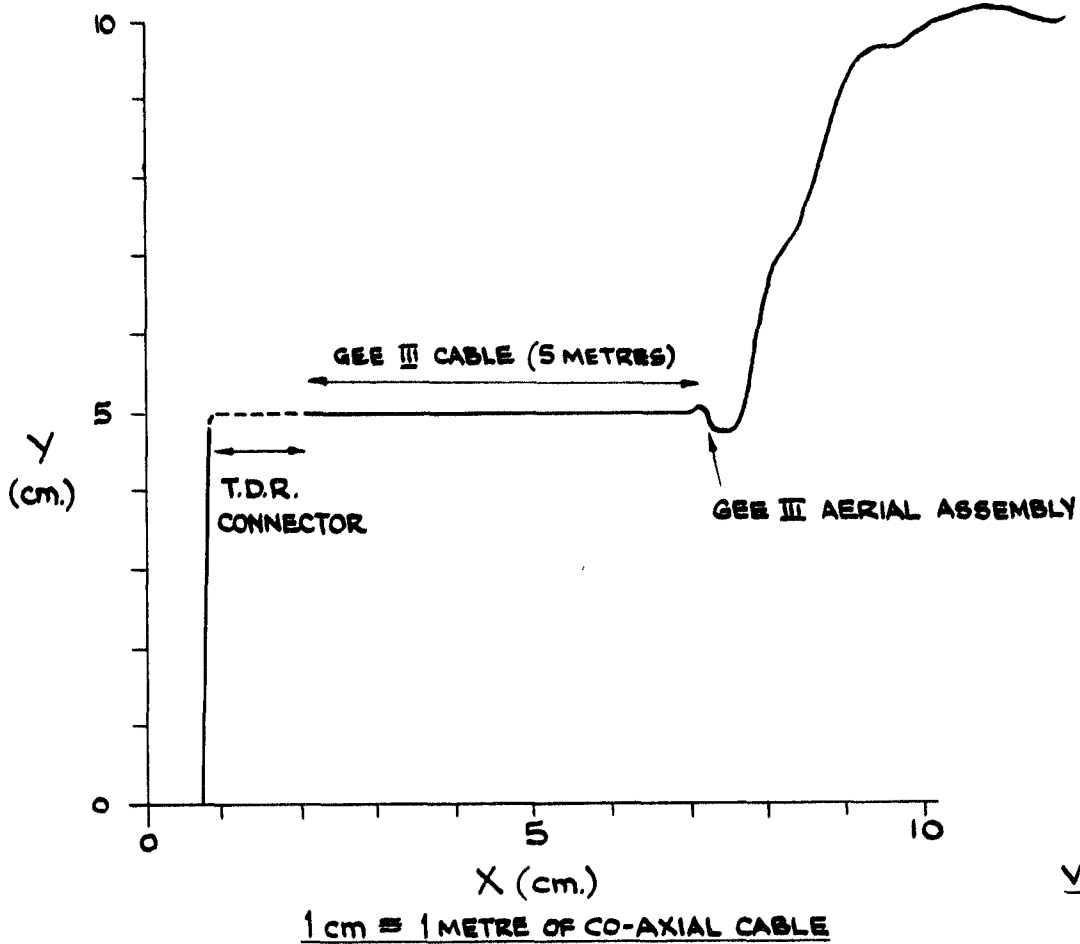
VARSITY
FIG. 9



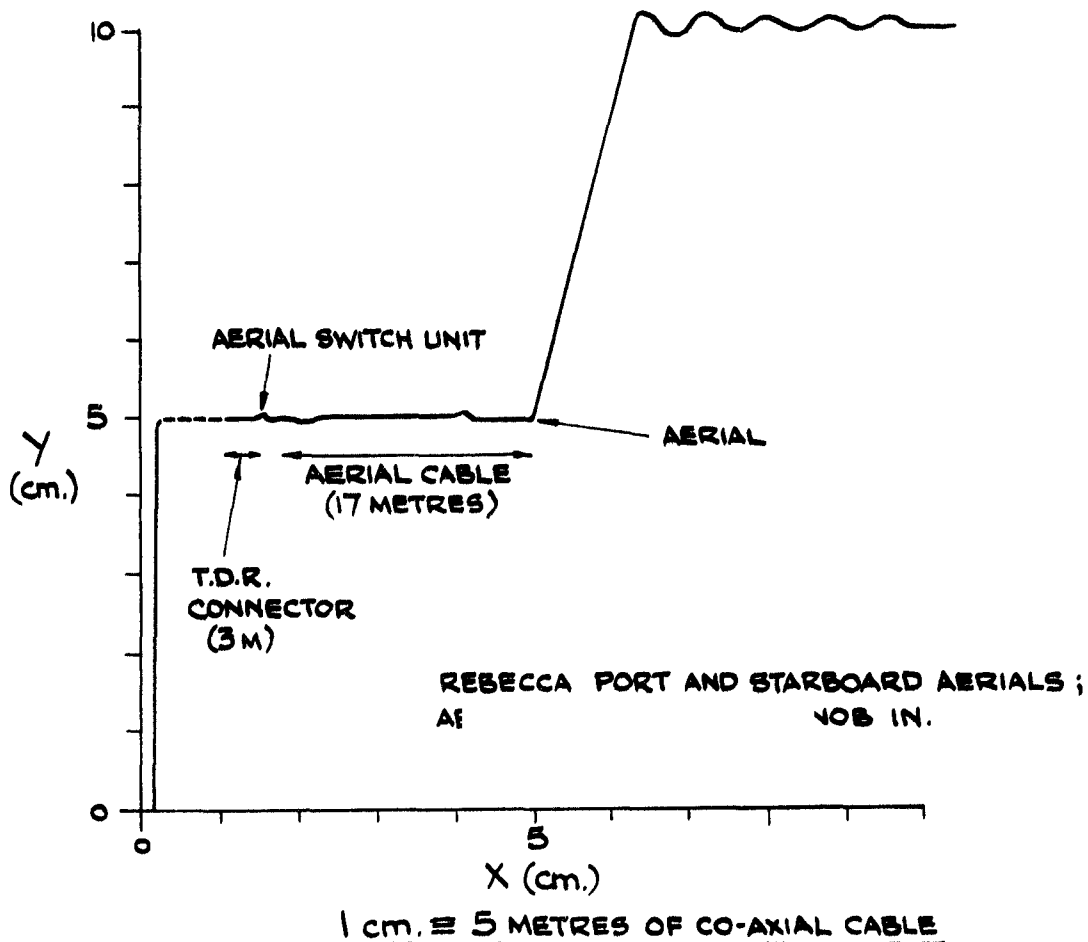
VARSIITY
FIG. 10



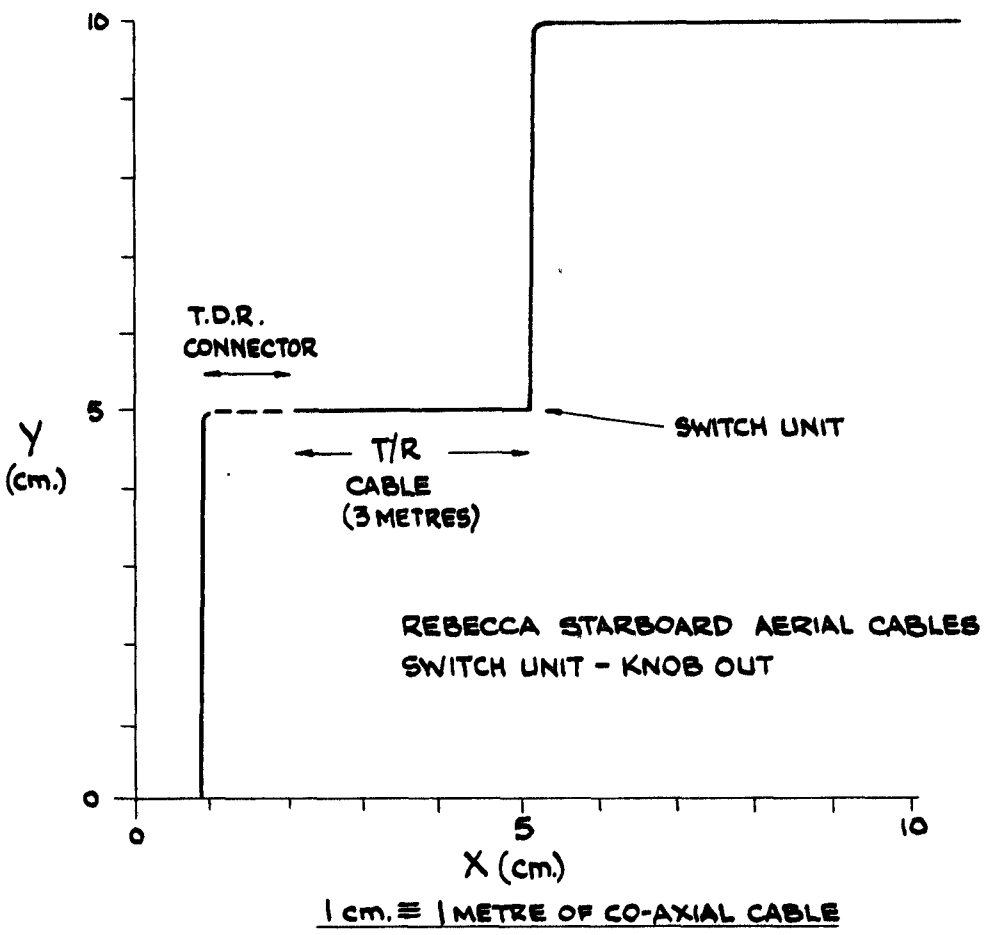
VARSIITY
FIG. 11



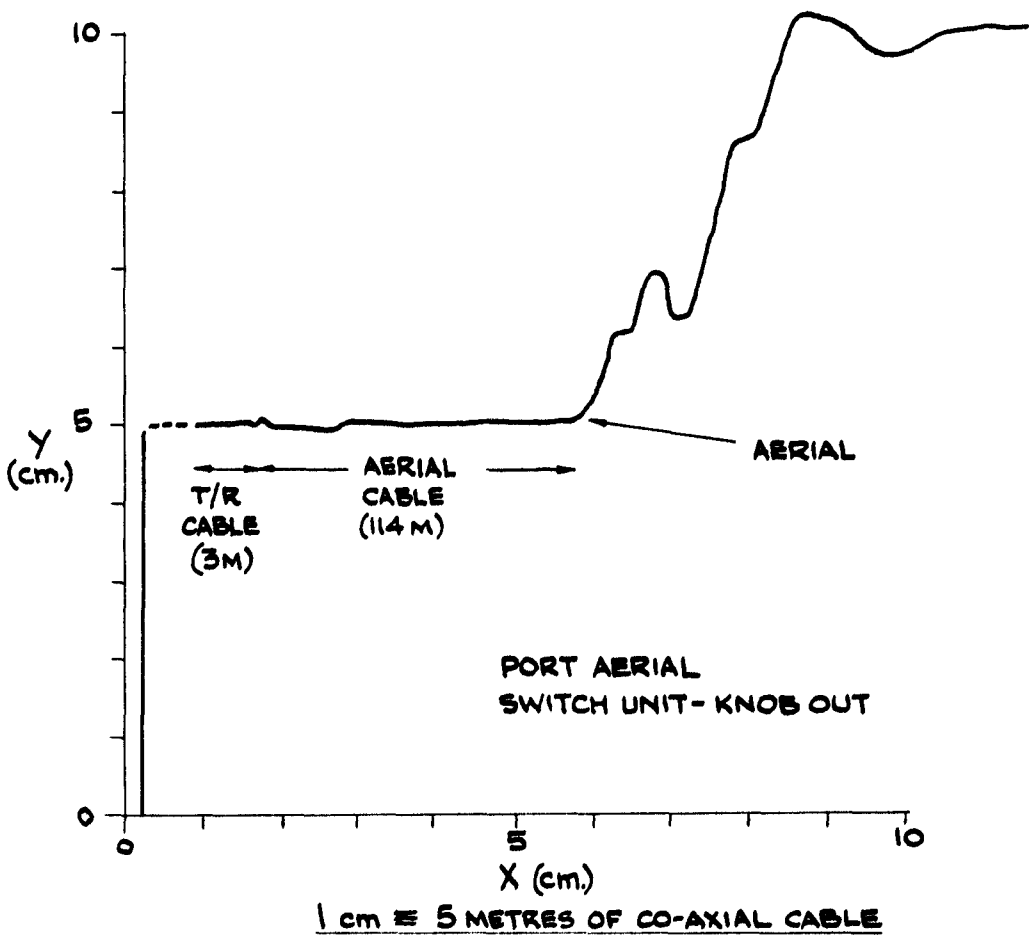
VARSAITY
FIG. 12



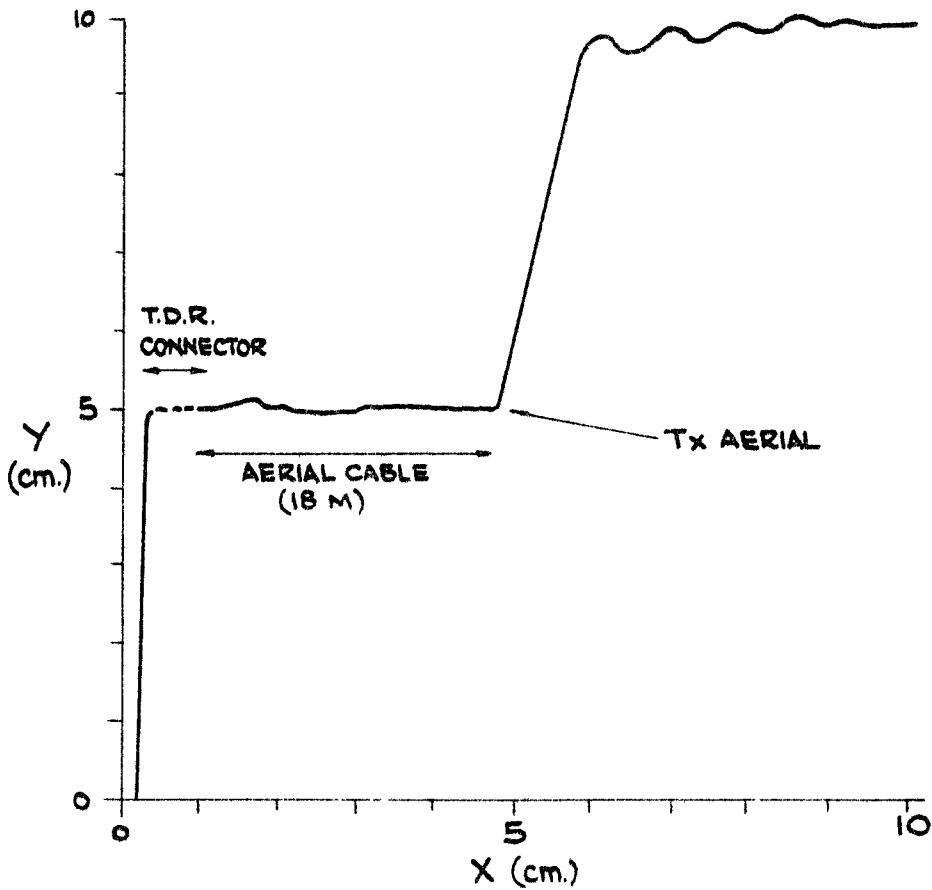
VARSAITY
FIG. 13



VARSBITY
FIG. 14

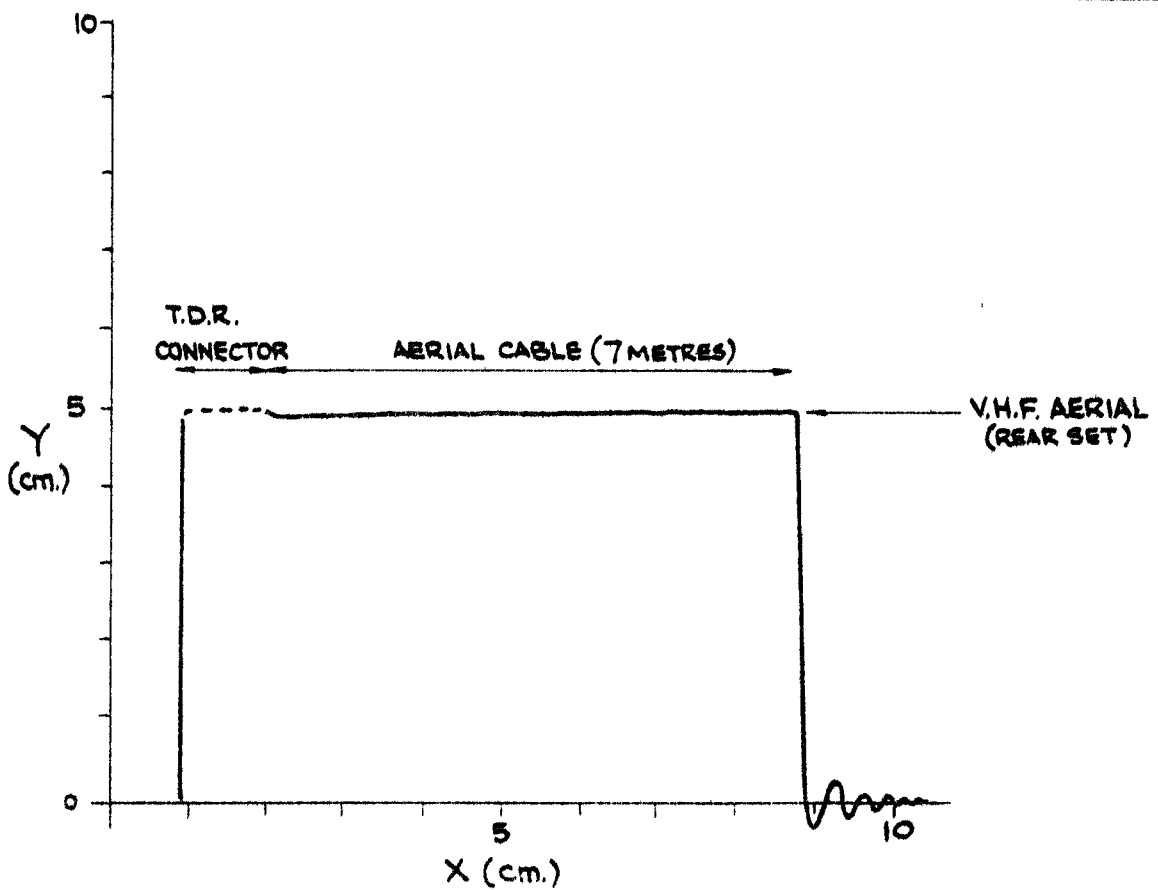


VARSBITY
FIG. 15



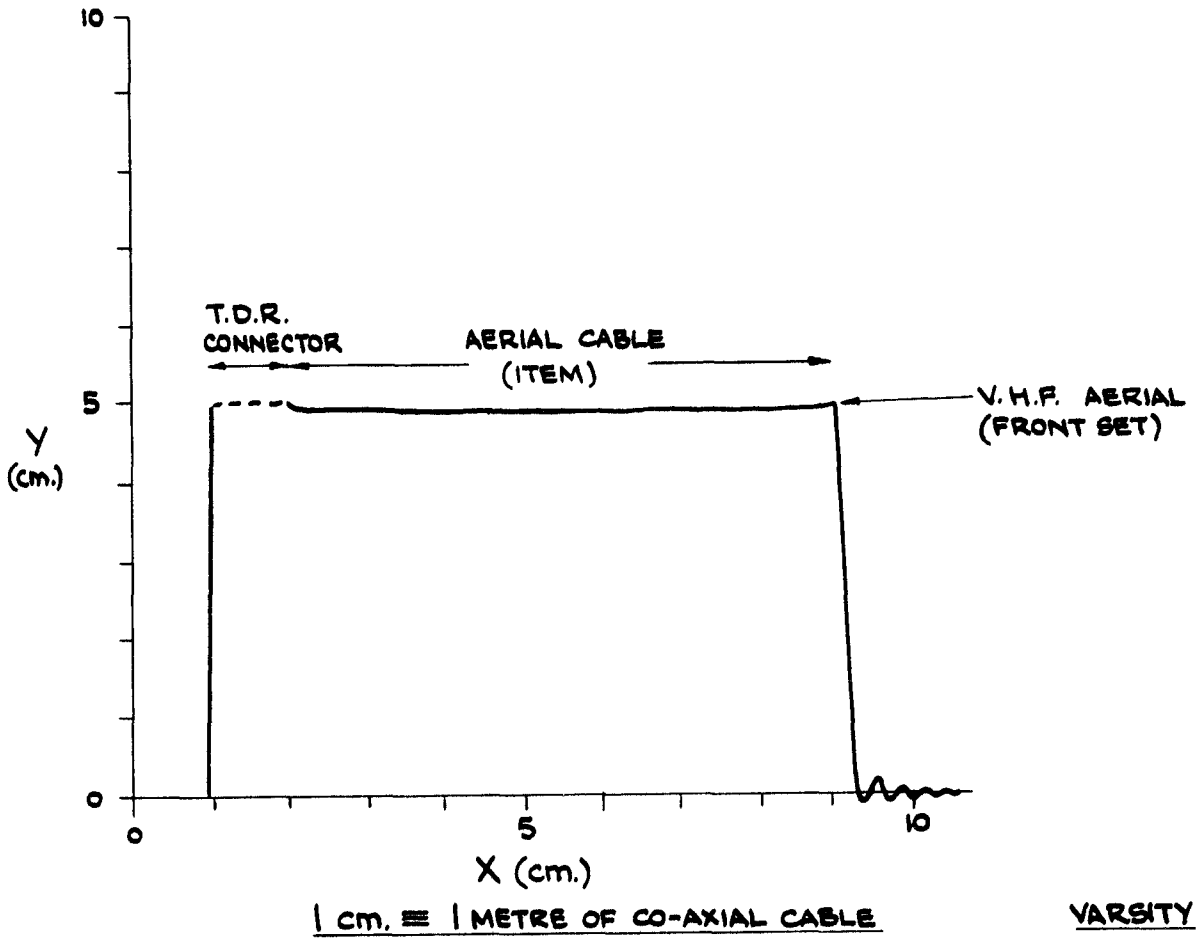
1 cm. \equiv 5 METRES OF CO-AXIAL CABLE

VARSITY
FIG. 16

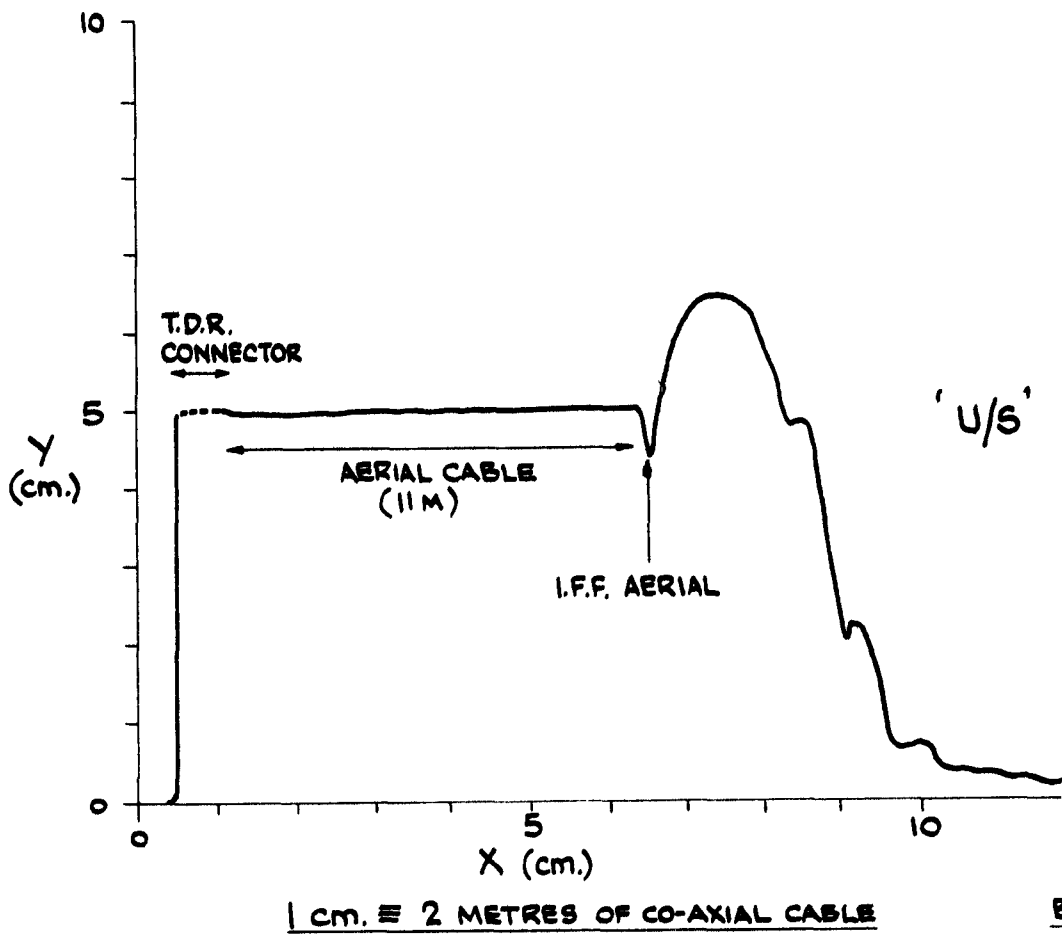


1 cm. \equiv 1 METRE OF CO-AXIAL CABLE

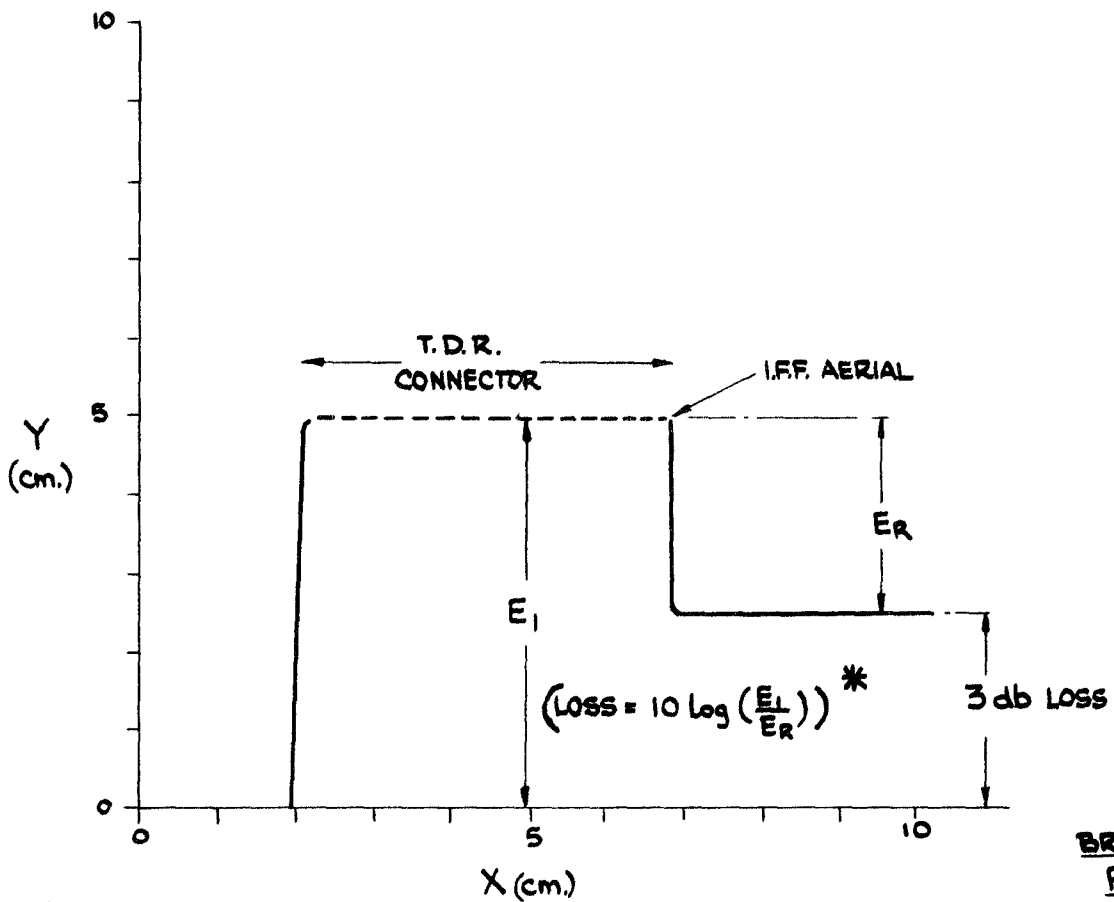
VARSITY
FIG. 17



VARSIITY
FIG. 18

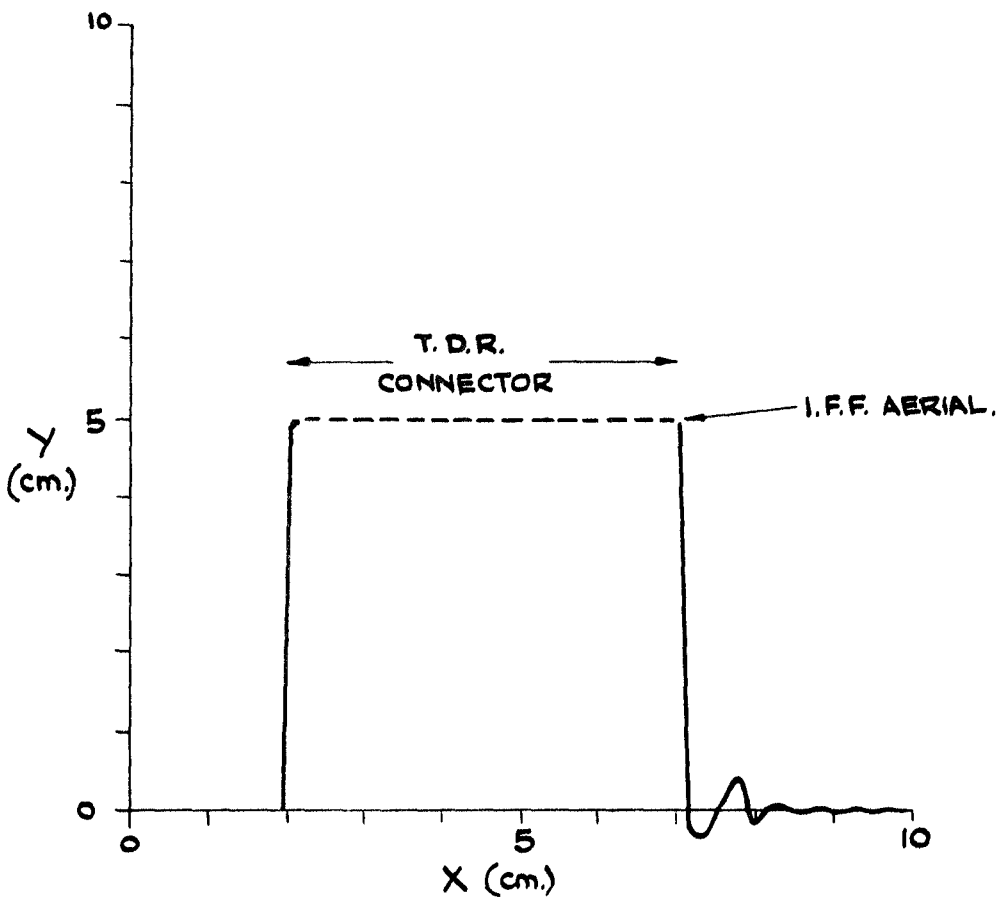


BRITANNIA
FIG. 19



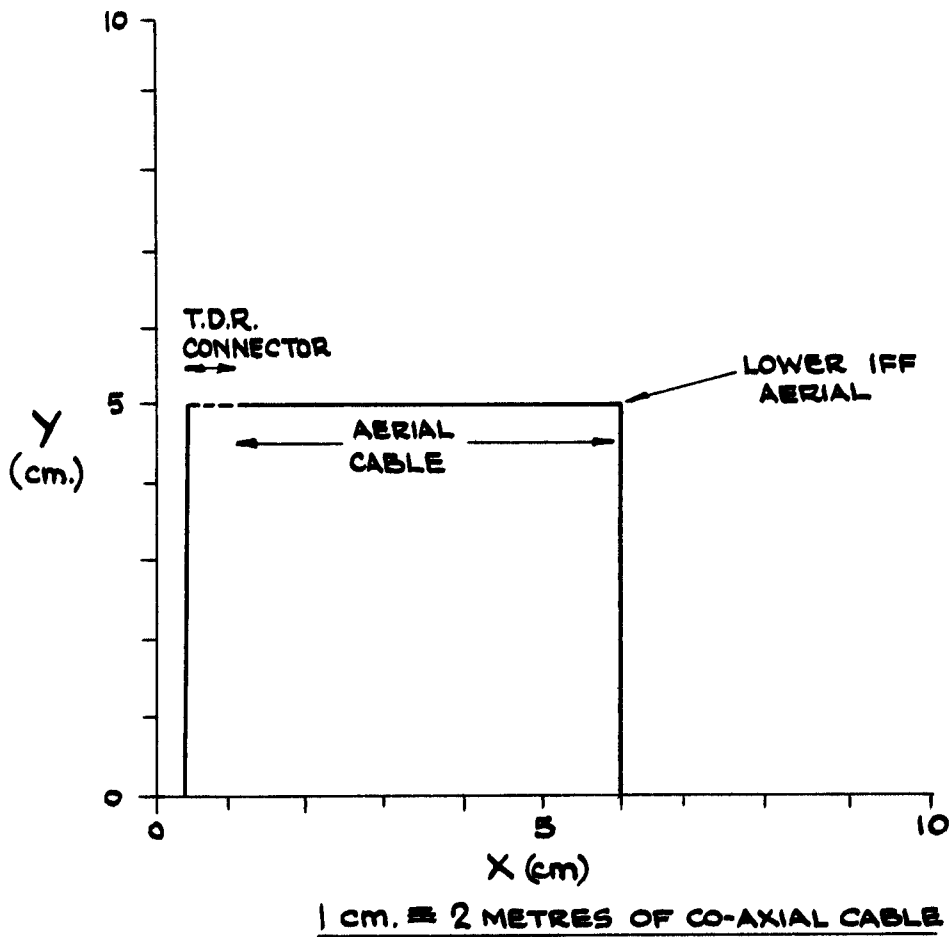
BRITANNIA
FIG. 20

* BROAD-BAND ATTENUATION LOSSES CAN ONLY BE MEASURED DIRECTLY WITH OPEN OR SHORT CIRCUIT TERMINATIONS. (FIG. 20 - SHORT CCT.)

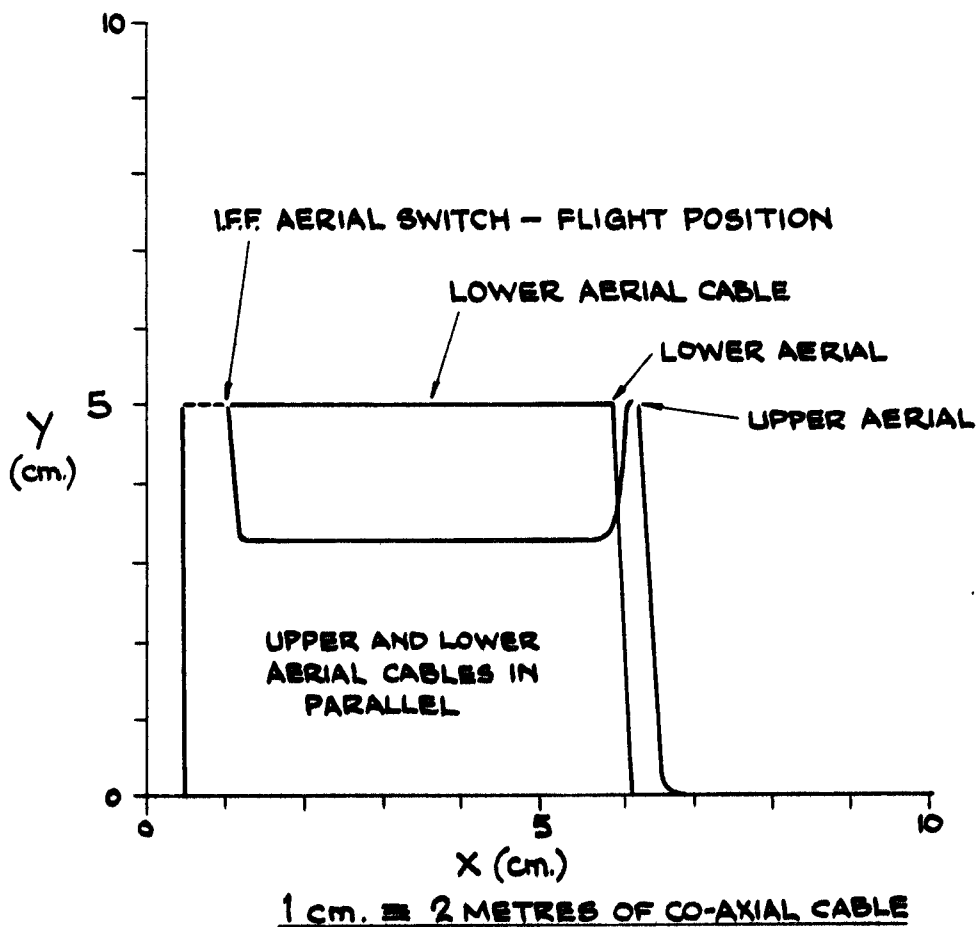


1 cm. = 2 METRES OF CO-AXIAL CABLE.

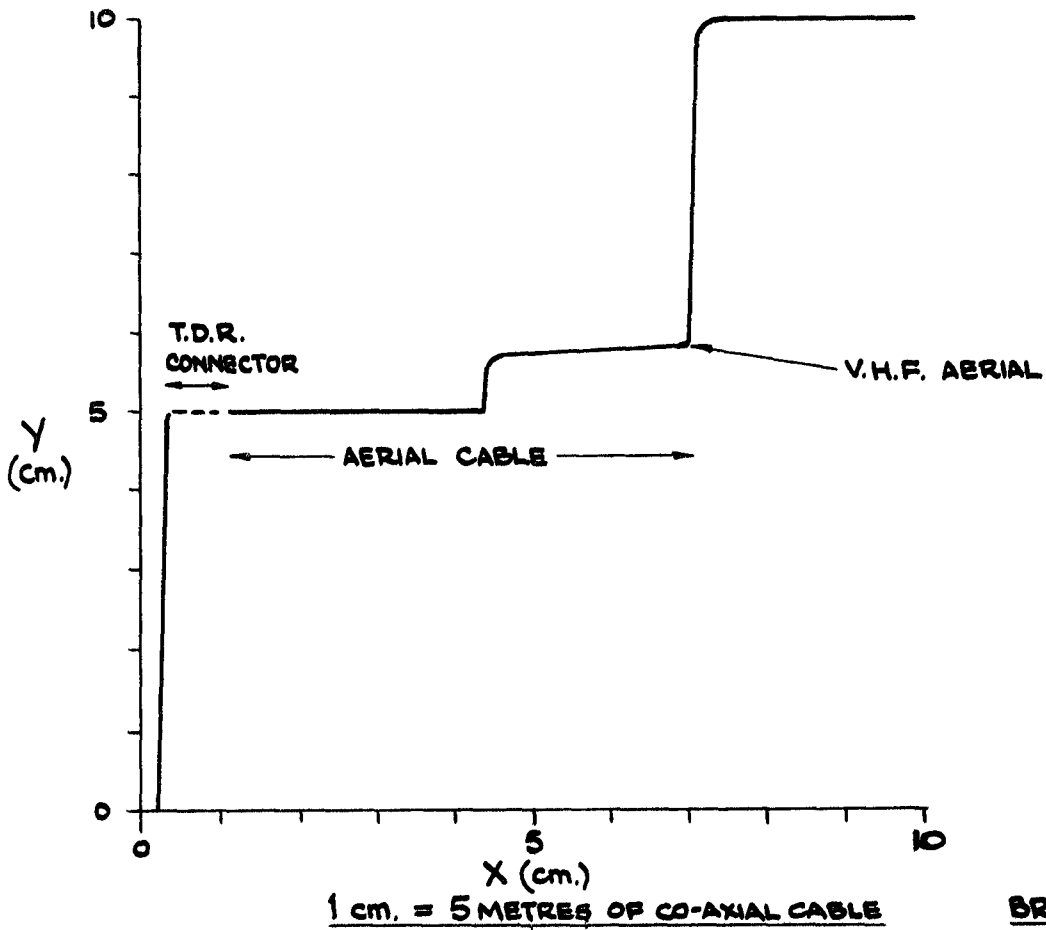
BRITANNIA
FIG. 21



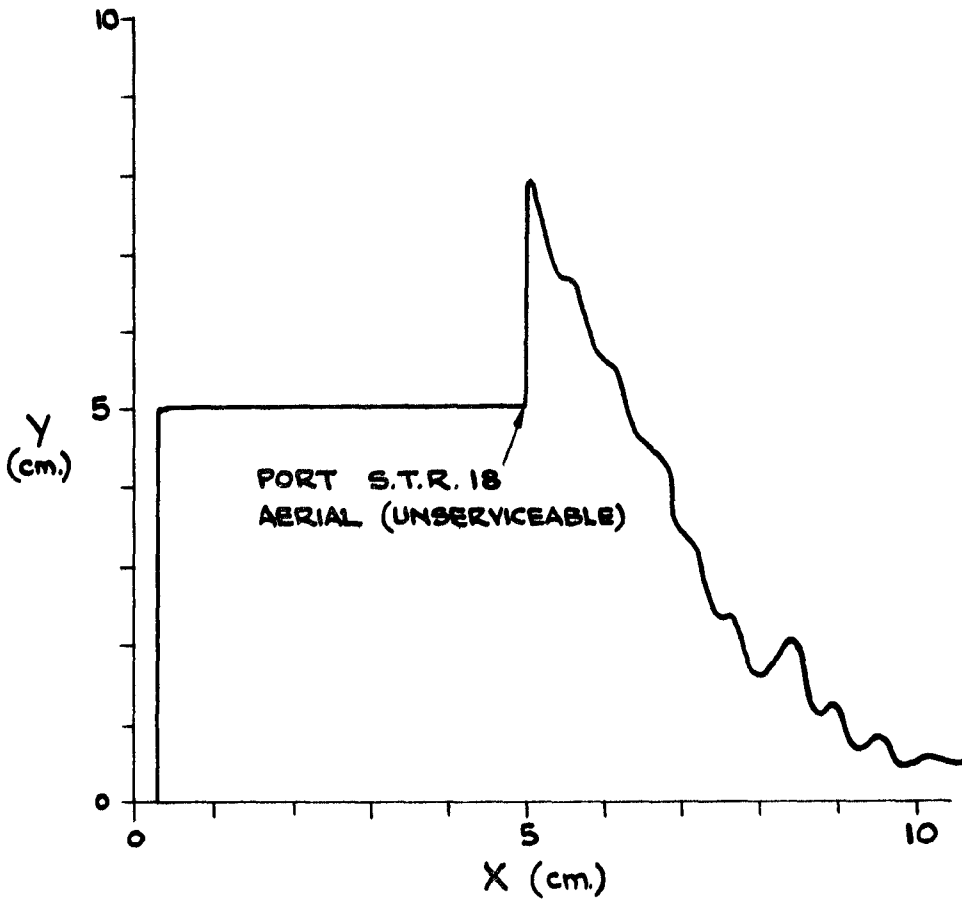
BRITANNIA
FIG. 22



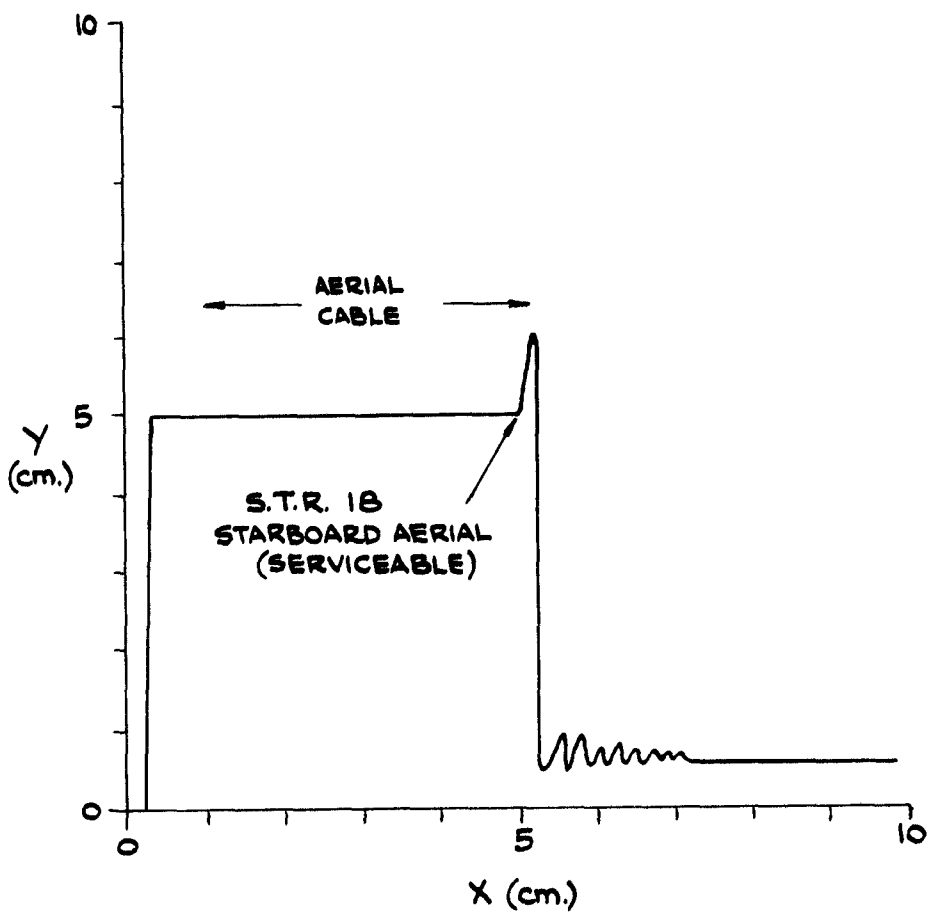
BRITANNIA
FIG. 23



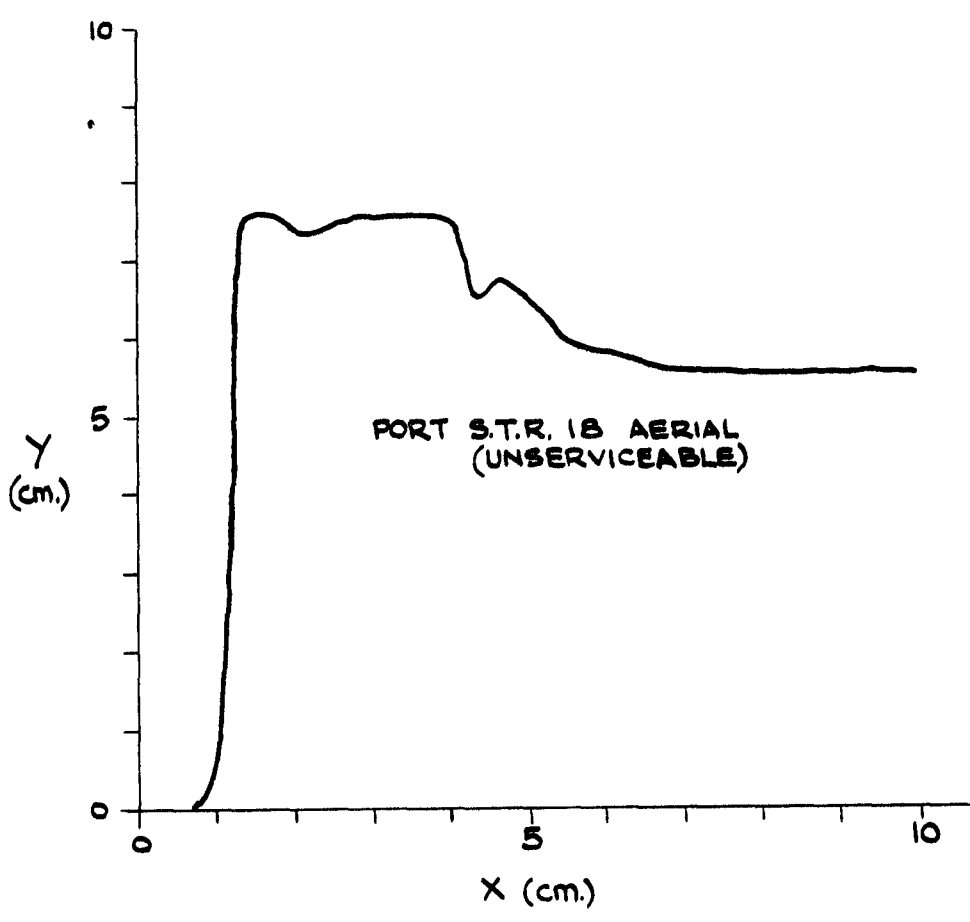
BRITANNIA
FIG. 24



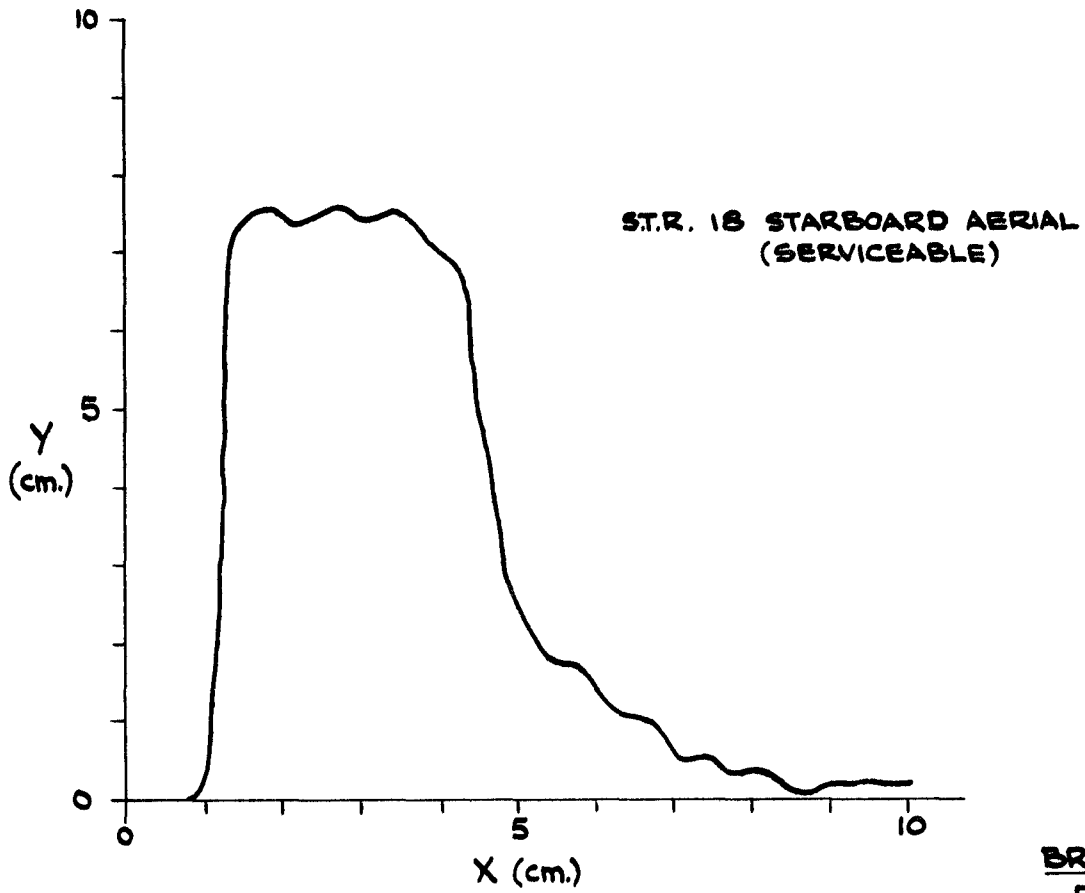
BRITANNIA
FIG. 25



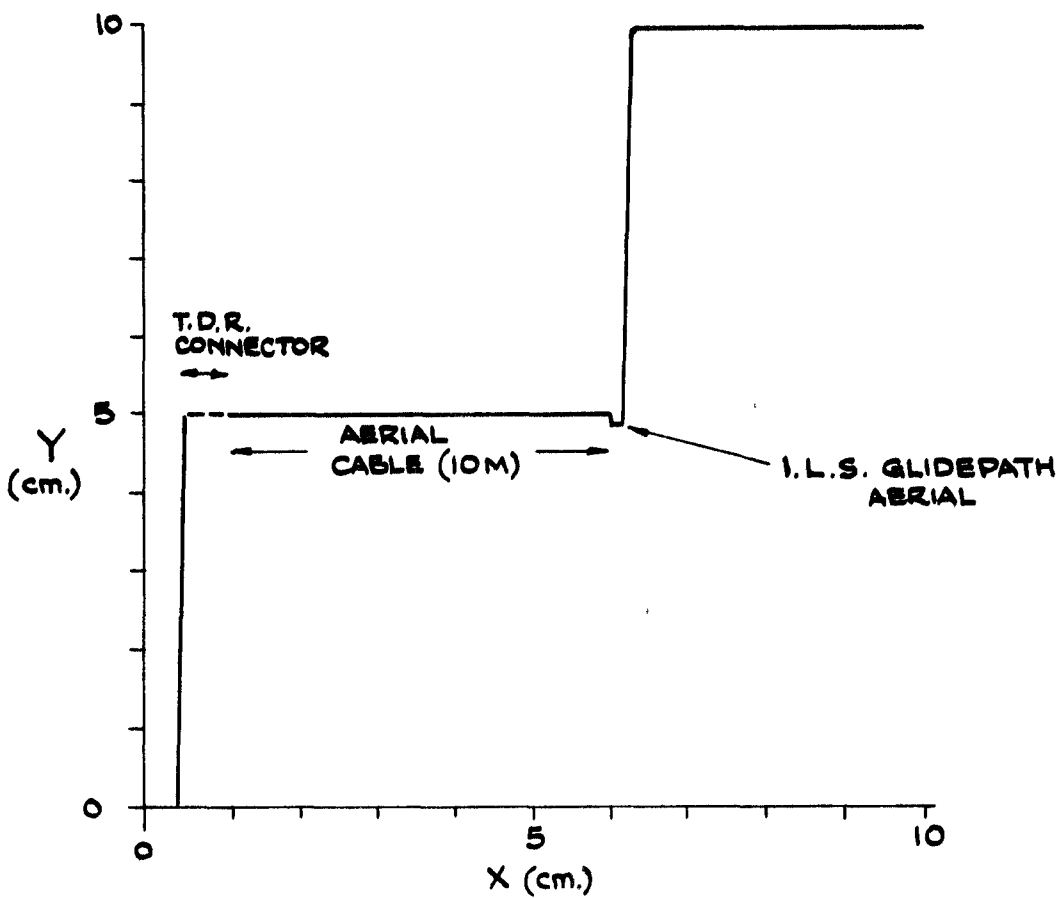
BRITANNIA
FIG. 26



BRITANNIA
FIG. 27.

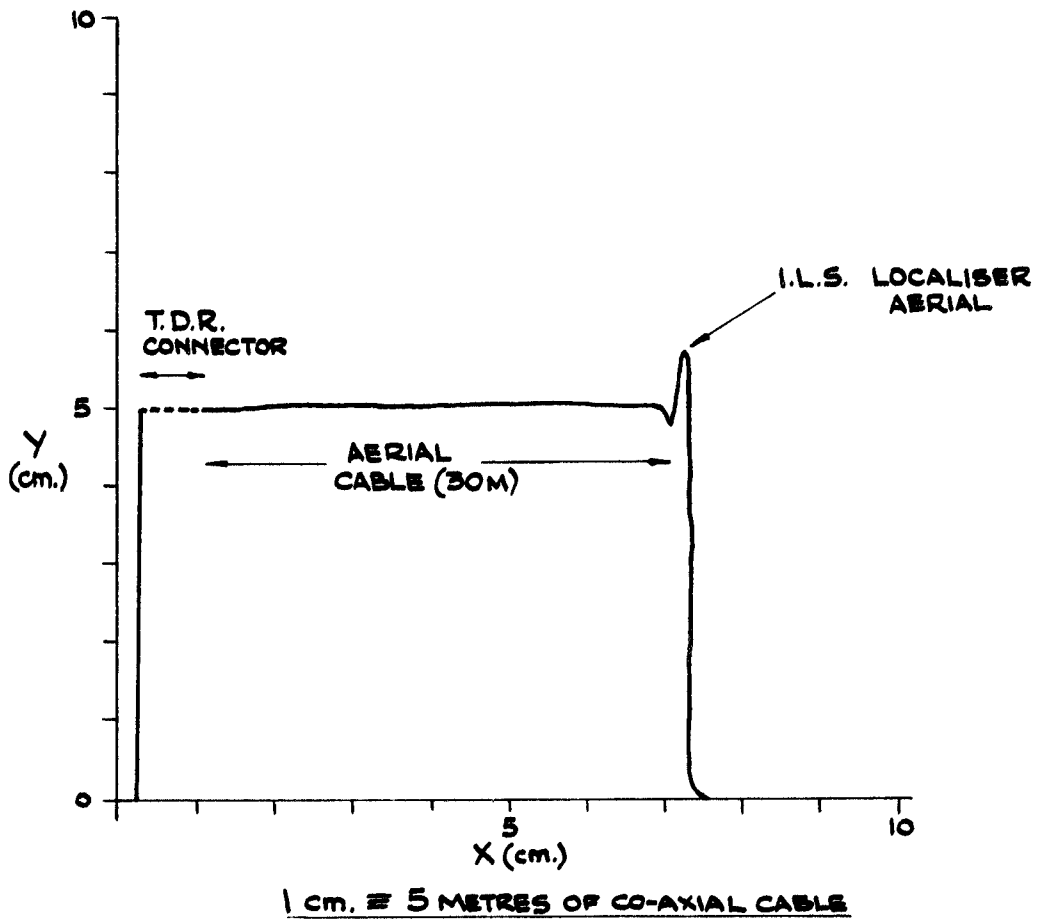


BRITANNIA
FIG. 28

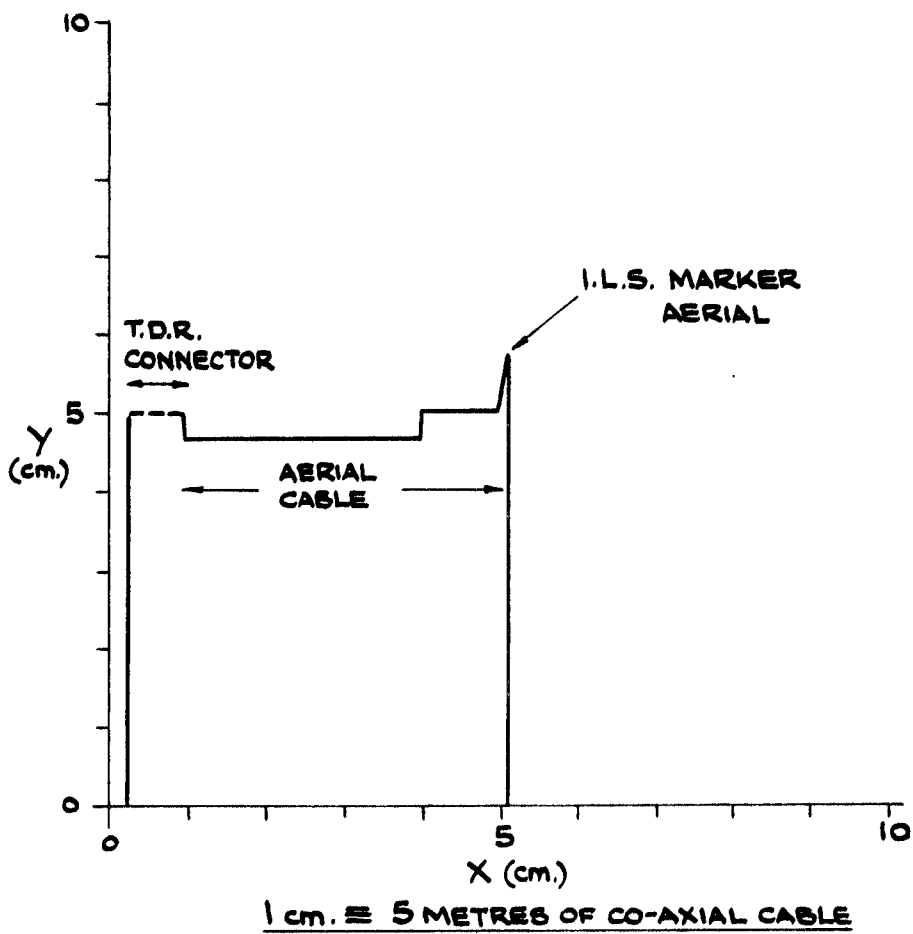


1 cm. = 2 METRES OF CO-AXIAL CABLE

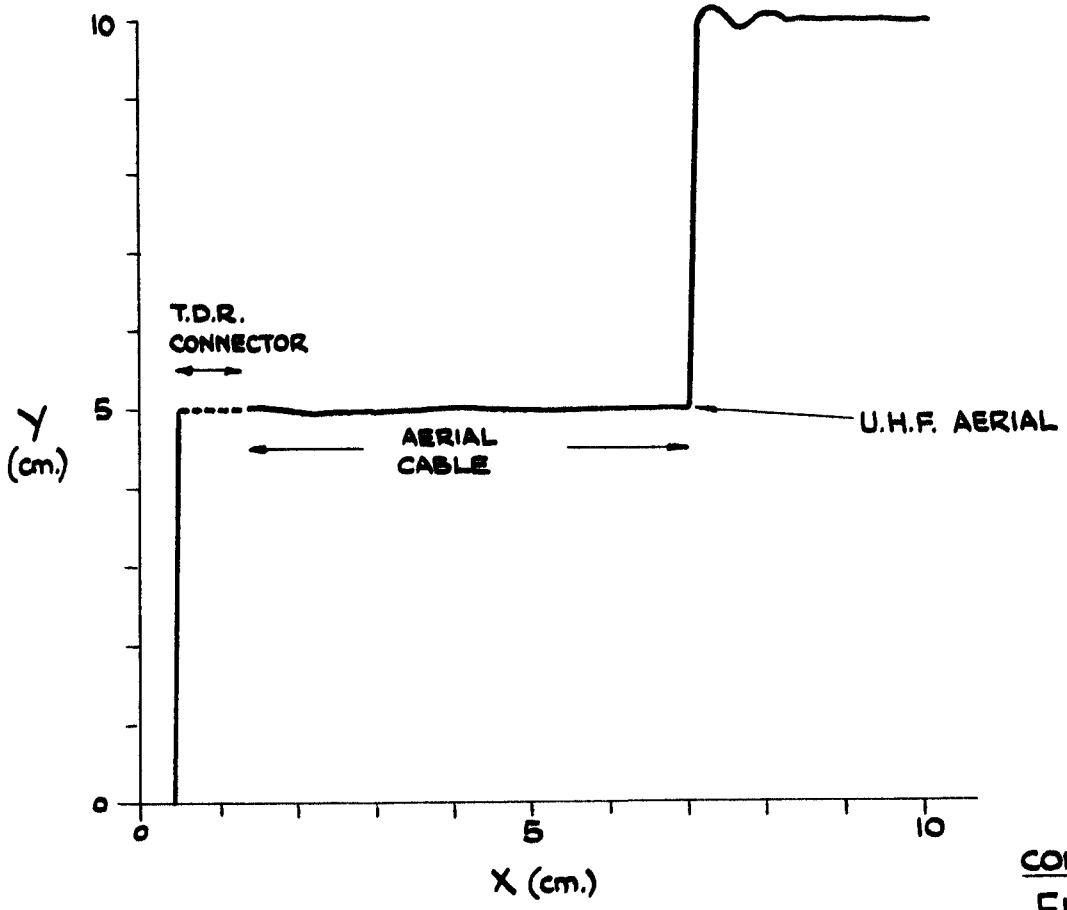
COMET
FIG. 29



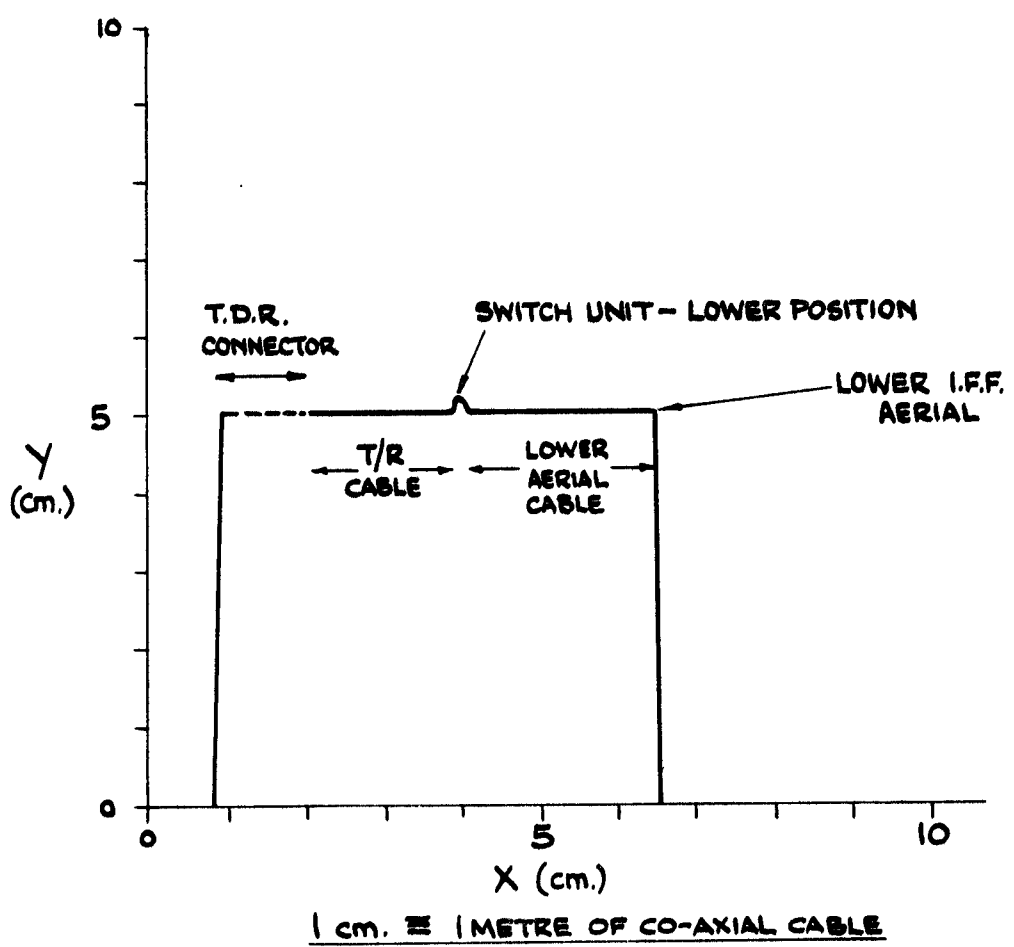
COMET
FIG.30



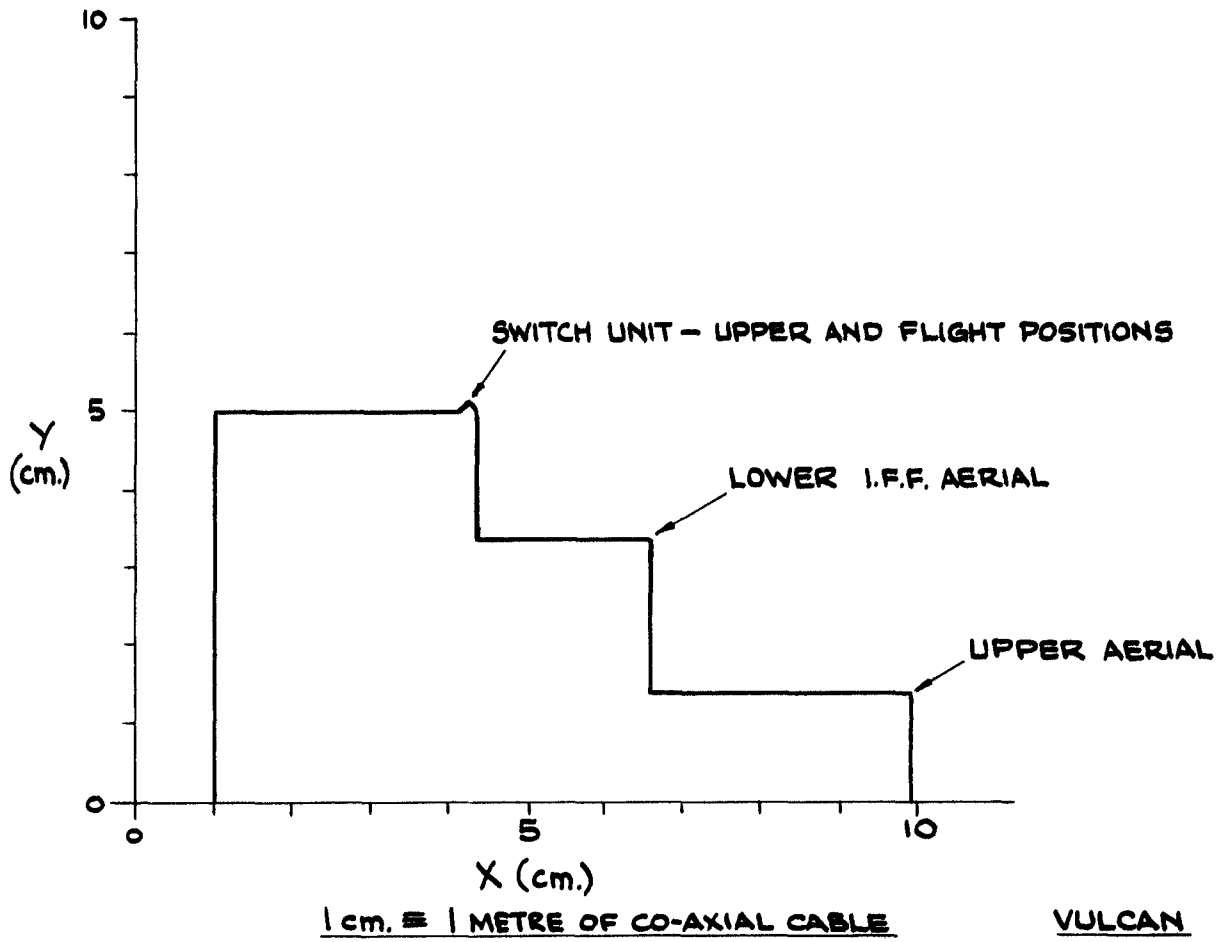
COMET
FIG.31.



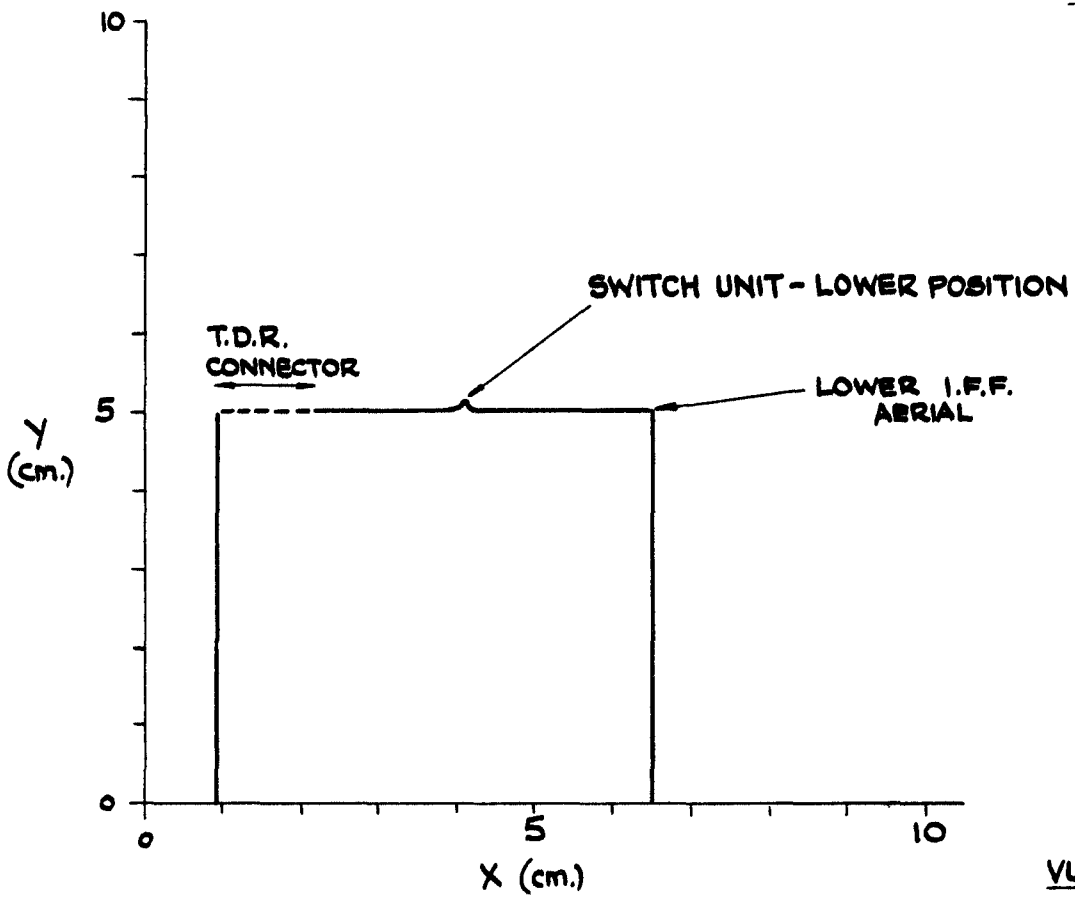
COMET
FIG.32



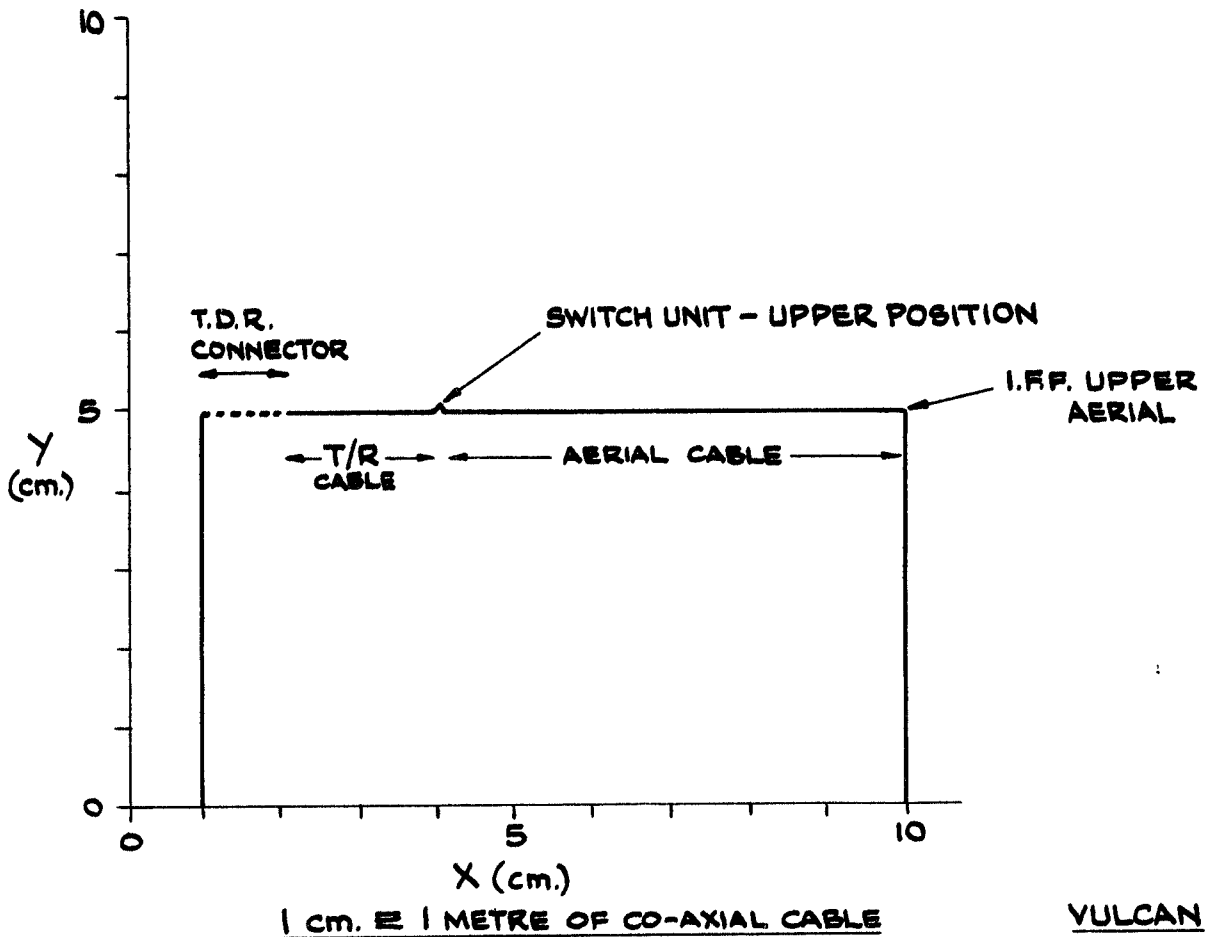
VULCAN
FIG.33



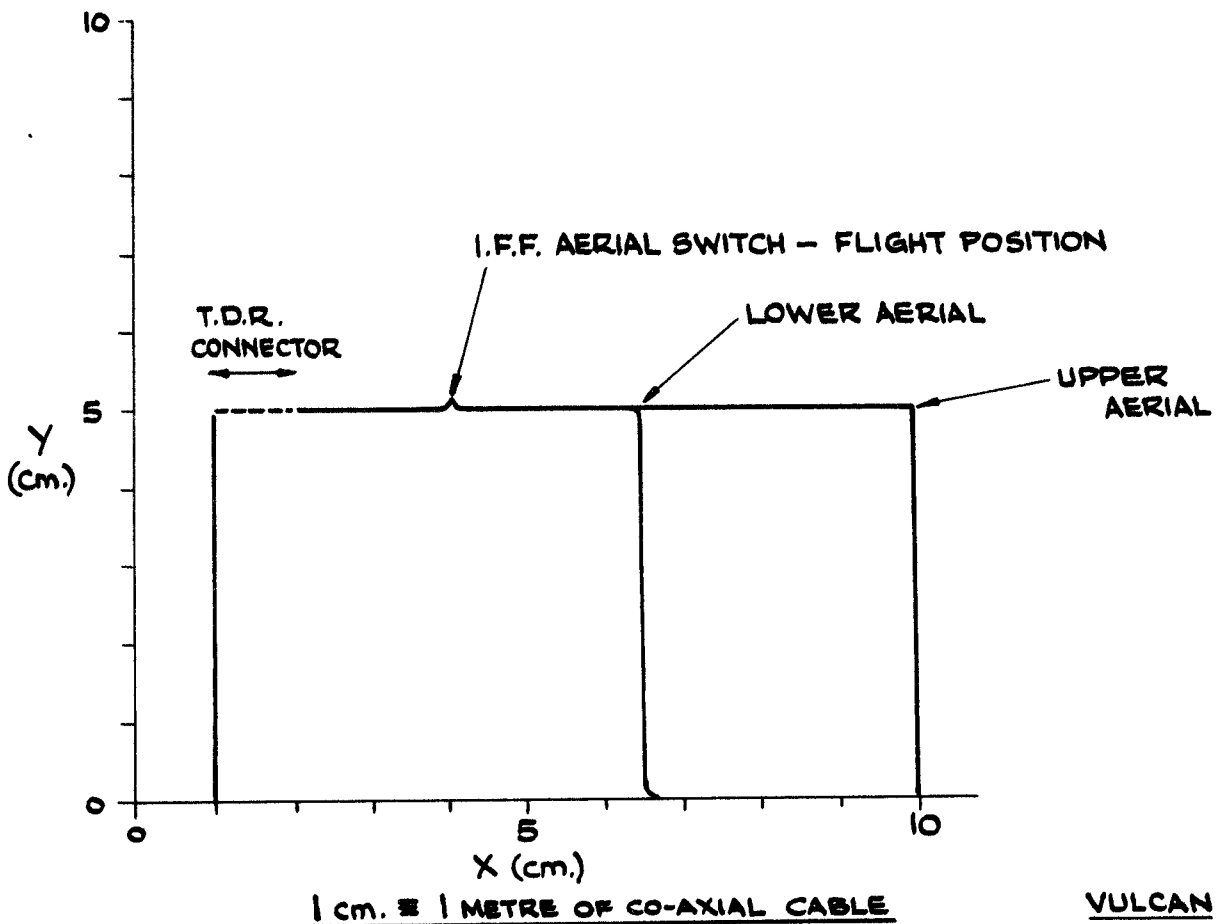
VULCAN
FIG. 34



VULCAN
FIG. 35



VULCAN
FIG.36



VULCAN
FIG.37